

DRYWALL



Landygo Drywall Ltd.
3175 Wawn Court
Kamloops, B.C. V2B 0B4
(250) 554-3131 Office
(778) 257-1116 Cellular
landygo_drywall@hotmail.com

December 15th, 2017

RE: Village Walk – A&T Project Developments Inc.

Drywall and taping materials and labour are warranted for one (1) year from the date of substantial completion.

Warranty covers improper installation of these trades. Drywall, tape cracking or nail pops caused by moisture content, extreme temperature fluctuations, or structural movement is not covered.

Sincerely,

A handwritten signature in blue ink, appearing to read 'Kerry Landygo', is written over a faint, circular embossed corporate seal.

Kerry Landygo
Owner
Landygo Drywall Ltd.

CORPORATE SEAL

SAFETY DATA SHEET

Section 1: Identification

1.1 Product identifier:

Gypsum Core Board Products

Product names:

US Product Line:

Regular
54" Regular
Type X
54" Type X
Type C
Sheathing Treated Core
Sheathing Treated Core Type X
Abuse Resistant Type C
Abuse Resistant Type X
Interior Ceiling
Veneer Plaster Base
Veneer Plaster Base Type C
Veneer Plaster Base Type X
1/4" Flex
Shaftliner Type X
Exterior Soffit
Exterior Soffit Type C
Exterior Soffit Type X
Evenwall
54" Evenwall
Evenwall Type X
54" Evenwall Type X
Moisture and Mold Resistant with M2Tech
Moisture and Mold Resistant Shaftliner Type X with M2Tech
AirRenew M2Tech
AirRenew Essential
AirRenew Essential Type X
AirRenew M2Tech Type X
Extreme Abuse
Extreme Impact
SilentFX QuickCut
SilentFX QuickCut Type X
Easi-Lite Lightweight Gypsum Board
Easi-Lite Type X Lightweight Gypsum Board
Easi-Lite 30 Lightweight Gypsum Board

Canadian Product Line:

Regular
54" Regular
Type X
54" Type X
Type C
Sheathing Treated Core
Sheathing Treated Core Type X
Abuse Resistant Type C
Abuse Resistant Type X
Interior Ceiling
Veneer Plaster Base
Veneer Plaster Base Type X
1/4" Flex
Shaftliner Type X
Steps
Cove and Cornice
Moisture and Mould Resistant with M2Tech
Moisture and Mold Resistant Shaftliner Type X with M2Tech
AirRenew M2Tech
AirRenew Essential
AirRenew Essential Type X
AirRenew M2Tech Type X
Extreme Abuse
Extreme Impact
Easi-Lite Lightweight Gypsum Board
Easi-Lite Type X Lightweight Gypsum Board
Easi-Lite 30 Lightweight Gypsum Board
SilentFX QuickCut
SilentFX QuickCut Type X

1.2 Recommended Uses:

Gypsum panels and decorative molding for interior and exterior applications.

Restrictions on use: None identified

1.3 Supplier:

CertainTeed Gypsum, Inc.
20 Moores Road
Malvern, PA 19355
Web Site: www.certainteed.com

CertainTeed Gypsum Canada, Inc.
2424 Lakeshore Road West,
Mississauga, Ontario, Canada
L5J 1K4
Web Site: www.certainteed.com

1.4 Emergency telephone number:

In case of an emergency call Team-1 Environmental Services Inc.
1-800-32 SPILL; 1-800-327-7455 (24 hrs)

SAFETY DATA SHEET

Section 2: Hazards Identification

2.1 Classification:

Not classified under any hazard classes.

2.2 Label elements:

Not classified

2.3 Other hazards:

Solid composite article. Gypsum board and decorative molding products do not present an inhalation, ingestion, or contact health hazard unless subjected to mechanical processing which may result in the generation of airborne dust or particulate.

Extreme Impact product: Glass fibers are irritating to the skin by mechanical action.

This SDS contains valuable information critical to the safe handling and proper use of the product. This SDS should be retained and available for employees and other users of this product.

Section 3: Composition/Information on Ingredients

<u>Chemical Name</u>	<u>CAS No.</u>	<u>Wt.%</u>
Calcium sulfate (Gypsum)	10101-41-4	>95
Cellulose (paper fiber)	9004-34-6	1 - 5
Silica fume	69012-64-2	<1.5
Extreme Impact product contains: Continuous filament glass mat (Fiberglass mat)	65997-17-3	0 - 2
Gypsum, Calcium sulphate dihydrate a naturally occurring mineral. Analyses of gypsum samples demonstrate that the concentration of crystalline silica as quartz is less than 0.025% (wt/wt %). This product contains no asbestos.		

Section 4: First Aid Measures

4.1 Description of first aid measures:

Inhalation: If breathing is difficult, remove victim to fresh air and keep at rest in a position comfortable for breathing. If exposed or concerned: Get medical advice.

Eye Contact: If in eyes: rinse cautiously with water for several minutes. Remove contact lenses if present and easy to do. Continue rinsing. If irritation persists get medical attention. DO NOT attempt to manually remove anything stuck to the eye.

Skin Contact: If on skin, wash with plenty of water and mild soap. If skin irritation or rash occurs get medical attention. Take off contaminated clothing and wash it before reuse.

Ingestion: If exposed or concerned: Get medical advice.

4.2 Most important symptoms / effects acute and delayed:

Inhalation: Breathing dusts from cutting or sanding may cause coughing and mild, temporary irritation by mechanical action.

Eye Contact: Dust particles may cause irritation as an abrasive in the eye.

Skin Contact: May be irritating to the skin as an abrasive or mechanical irritation from glass fibers.

Ingestion: Swallowing is not expected under normal conditions of use. If swallowed, may cause gastrointestinal problems.

4.3 Indication of any immediate medical attention and special treatment needed:

Not applicable

SAFETY DATA SHEET

Section 5: Firefighting Measures

5.1 Extinguishing media:

Use water and other extinguishing media appropriate to the surrounding fire conditions.

5.2 Specific hazards arising from the product:

Product is not flammable and does not support combustion.

Under fire conditions products of combustion may include sulfur oxides, carbon monoxide and carbon dioxide.

5.3 Special protective equipment and precautions for fire-fighters:

As for any fire, evacuate the area and fight the fire from a safe distance. Firefighters must wear full protective equipment including self-contained breathing apparatus with chemical protection clothing.

Section 6: Accidental Release Measures

6.1 Personal precautions, protective equipment and emergency procedures:

Wear protective gloves and clothing to prevent skin contact.

6.2 Environmental precautions:

Prevent releases into the environment.

6.3 Methods and material for containment and cleaning up:

Pick up or scoop spilled material and place in an appropriate container for re-use or disposal.

Section 7: Handling and Storage

7.1 Precautions for safe handling:

Minimize dust generation and accumulation.

Avoid breathing dusts.

Wear protective gloves. Launder contaminated work clothing before re-wearing

Do not eat, drink or smoke in work areas.

Wash hands thoroughly after handling this material.

7.2 Conditions for safe storage, including any incompatibilities:

Store in dry condition, protected from weather and out of direct sunlight. Protect from water and moisture.

Keep out of reach of children.

Store product flat.

Section 8: Exposure Controls / Personal Protection

8.1 Control parameters:

Occupational Exposure Limits: Consult local authorities for acceptable exposure limits.

<u>Ingredient</u>	<u>ACGIH® TLV-TWA</u>	<u>U.S. OSHA PEL</u>	<u>Other Exposure Limits</u>
Calcium sulfate	10 mg/m ³ (inhalable)	15 mg/m ³ (total dust); 5 mg/m ³ (respirable)	Not available
Cellulose (paper fiber)	10 mg/m ³	15 mg/m ³ (total dust); 5 mg/m ³ (respirable)	NIOSH REL: 10 mg/m ³ TWA 50mg/m ³ (respirable)
Silica fume	Not established	20 mppcf 80 mg/m ³ / % SiO ₂	Ontario (Canada) TWA: 2 mg/m ³ (respirable)
Fiberglass Mat – Synthetic Vitreous Fibers	5 mg/m ³ (inhalable) 1 f/cc (respirable fibers)	15 mg/m ³ (total dust) 5 mg/m ³ (respirable)	Ontario (Canada) TWA: 5 mg/m ³ (inhalable) 1 f/cc (Respirable fibers: length > 5µm; aspect ratio ≥3:1)

SAFETY DATA SHEET

8.2 Exposure controls:

Engineering Controls: General ventilation is adequate for application of product in its original form. If airborne particulates are generated, monitor dust concentrations in air and provide local exhaust ventilation when any exposure guideline is exceeded.

Eye/Face Protection: Not required but it is good practice to wear safety glasses or chemical safety goggles.

Skin Protection: Cut-resistant work gloves are recommended when handling this product due to the potential for cuts and abrasions from the rough edges of the product. Wear protective clothing as needed to protect skin from abrasion in contact with fibrous glass. Launder contaminated clothing before re-wearing.

Respiratory Protection: When dust concentrations in air exceed the occupational exposure guidelines, always take the following precautions:

- Wear a NIOSH approved dust respirator.
- Maintain adequate ventilation and air circulation.
- Warn others in the area.

A respiratory protection program that meets the regulatory requirement, such as OSHA's 29 CFR 1910.134, ANSI Z88.2 or Canadian Standards Association (CSA) Standard Z94.4, must be followed whenever workplace conditions warrant a respirator's use.

Section 9: Physical and Chemical Properties

9.1 Information on basic physical and chemical properties:

Appearance:	Solid. Boards or panels with white core and colored paper surface.
Odor:	Odorless
Odor threshold:	Not applicable
pH:	7 – 9 (in aqueous slurry)
Melting point/freezing point:	Not applicable
Initial boiling point and boiling range:	Not applicable
Flash point:	Not applicable
Flammability:	Not flammable
Auto-ignition temperature:	Not applicable
Upper/lower flammability or explosive limits:	Not applicable
Evaporation rate:	Not applicable
Vapor pressure:	Not applicable
Vapor density:	Not applicable
Relative density:	2.30-2.37
Solubility (ies):	Insoluble in water
Partition coefficient (n-octanol/water):	Not applicable
Decomposition temperature:	1450°C (2642°F)
Viscosity:	Not applicable

Section 10: Stability and Reactivity

10.1 Reactivity:

Not classified for reactivity hazards.

10.2 Chemical Stability:

Stable at normal ambient and anticipated storage and handling conditions.

10.3 Possibility of Hazardous Reactions:

None known.

Gypsum is a stable, unreactive material under normal workplace conditions. Hazardous reactions may occur with some highly reactive materials or at high temperatures.

10.4 Conditions to Avoid:

Not available

10.5 Incompatible Materials:

None known.

10.6 Hazardous Decomposition Products:

None known.

SAFETY DATA SHEET

Section 11: Toxicological Information

11.1 Likely routes of exposure

Skin contact

11.2 Acute toxicity

Inhalation: Data not available. None of the component substances are considered toxic or harmful by inhalation.

Ingestion: Data not available. None of the component substances are considered toxic or harmful if swallowed.

Skin: Component substances are not absorbed through the skin.

11.3 Acute toxicity data:

Acute Toxicology data are not available for this solid article.

11.4 Skin corrosion / irritation

Data not available. Component substances are not considered to be chemical irritants. Contact with glass fibers released from this product can be irritating to the skin.

11.5 Serious eye damage / irritation

Particulates in the eye may cause irritation by mechanical action.

11.6 STOT (Specific Target Organ Toxicity) – Single exposure

Data not available. Inhaling high concentrations of dust, during installation of product, may cause coughing and mild, temporary irritation.

11.7 STOT (Specific Target Organ Toxicity) – Repeated exposure

Data not available.

11.8 Aspiration hazard

Does not meet criteria for classification for aspiration toxicity.

11.9 Sensitization - respiratory and/or skin

Not known to be a skin or respiratory sensitizer.

11.10 Carcinogenicity

No ingredients of this product have been evaluated for carcinogenicity by the International Agency for Research on Cancer (IARC) or the American Conference of Governmental Industrial Hygienists (ACGIH®).

Occupational exposures to Synthetic vitreous glass fibers
IARC - Group 3: not classifiable as to its carcinogenicity in humans
ACGIH® - A4: Not Classifiable as a Human Carcinogen

11.11 Reproductive toxicity

Data not available

11.12 Germ cell mutagenicity

Data not available

11.13 Interactive effects

Tobacco smoking in combination with long-term high dust exposures may increase both smoking and dust-related pulmonary health problems.

SAFETY DATA SHEET

Section 12: Ecological Information

12.1 Toxicity:

Ecotoxicity data are not available.

12.2 Persistence and degradability:

Not available

12.3 Bioaccumulative potential:

Not available

12.4 Mobility in soil:

Not available

12.5 Other adverse effects:

Not available

Section 13: Disposal Considerations

13.1 Disposal methods:

Do NOT discharge into any sewers, on the ground or into any body of water.

The required hazard evaluation of the waste and compliance with the applicable hazardous waste laws are the responsibility of the user. Dispose of contents/container in accordance with local, regional, national and international regulations.

Section 14: Transport Information

14.1 UN Number

Not regulated by international transport regulations (IMDG, UN Model Regulations).

14.2 UN proper shipping name

Not applicable

14.3 Transport hazard class(es)

Not applicable

14.4 Packing group

Not applicable

14.5 Environmental hazards

Not available

14.6 Special precautions for user

Not available

14.7 U.S. Hazardous Materials Regulation (DOT 49CFR):

Not regulated

14.8 Canada Transportation of Dangerous Goods (TDG) Regulations:

Not regulated

SAFETY DATA SHEET

Section 15: Regulatory Information

15.1 Safety, health and environmental regulations/legislation specific for the substance or mixture:

USA

OSHA:

Not considered a hazardous chemical by the OSHA Hazard Communication Standard 29 CFR1910.1200 (2012).

TSCA Status:

Substances are listed on the TSCA inventory or are exempt.

Canada

WHMIS Classification:

WHMIS 1988: Not controlled.

WHMIS 2015: Not classified in any WHMIS hazard class.

NSNR Status:

Component substances are listed on the on the DSL, NDSL or are exempt.

Section 16: Other Information

Revision date:

November 16, 2016

Revision summary:

Revisions since previous version May 8, 2014: Revisions to product names Section 1.1
Revised SDS format to comply with OSHA 2012 and WHMIS 2015.

References and sources for data:

CCOHS, Cheminfo
RTECS, Registry of Toxic Effects of Chemical Substances
NIOSH, Pocket Guide to Chemical Hazards.

Legend to abbreviations:

ACGIH – American Conference of Governmental Industrial Hygienists
GHS- Globally Harmonized System for Classification and Labeling.
OSHA - Occupational Safety and Health Administration
TWA – Time weighted average
TLV - Threshold Limit Value
WHMIS – Workplace Hazardous Materials Information System.

Additional information:

Information listed is believed to be accurate but not warranted or guaranteed.

CertainTeed

Paper-faced Gypsum Board Limited Warranty

LIMITED WARRANTY

CERTAINTEED EXPRESSLY WARRANTS TITLE AND THAT THE PRODUCTS SOLD BY IT HEREUNDER ARE FREE FROM DEFECTS IN MATERIALS AT THE TIME OF SHIPMENT. THIS WARRANTY IS LIMITED TO THE ORIGINAL OWNER, AND MAY NOT BE ASSIGNED OR TRANSFERRED. THIS WARRANTY MAY NOT BE AMENDED, RESTATED OR ENLARGED BY ANY CERTAINTEED REPRESENTATIVE, WRITTEN SALES INFORMATION OR DRAWINGS. EXCEPT FOR SUCH EXPRESS WARRANTY, CERTAINTEED MAKES NO WARRANTY OF ANY KIND WHATSOEVER, EXPRESS OR IMPLIED AND ALL WARRANTIES OF MERCHANTABILITY, FITNESS FOR A PARTICULAR PURPOSE, AND OTHER WARRANTIES OF ANY KIND ARE HEREBY DISCLAIMED BY CERTAINTEED AND EXCLUDED. PURCHASER AGREES THIS HAS BEEN NEGOTIATED AND CONSENTS HERETO. AS PURCHASER'S SOLE AND EXCLUSIVE REMEDY, CERTAINTEED SHALL, AT CERTAINTEED'S SOLE OPTION, REPLACE OR REPAIR ANY DEFECTIVE PRODUCTS, REFUND THE PURCHASE PRICE PAID FOR DEFECTIVE PRODUCTS, OR GRANT A REASONABLE ALLOWANCE BASED ON THE PURCHASE PRICE OF SUCH DEFECTIVE PRODUCTS. ANY CLAIMS OR EXCEPTIONS BY PURCHASER FOR DEFECTIVE PRODUCTS MUST BE MADE IN WRITING WITHIN 30 DAYS AFTER PURCHASER'S RECEIPT OF SHIPMENT AND IN ALL EVENTS BEFORE INSTALLATION IS COMMENCED, AND PURCHASER

SHALL GIVE CERTAINTEED AN OPPORTUNITY TO INVESTIGATE. CERTAINTEED IS FURNISHING BASIC PRODUCTS AT STANDARD PRICES AND IS NOT INSURING PURCHASER AGAINST POSSIBLE CONSEQUENCES OF ERROR, OMISSION OR NEGLIGENCE IN PRODUCTION OR DELIVERY, EXCEPT FOR REPLACEMENT OR REPAIR OF THE PRODUCT, REFUND OF THE PURCHASE PRICE, OR GRANT OF A REASONABLE ALLOWANCE, IN CERTAINTEED'S SOLE DISCRETION. CERTAINTEED SHALL NOT, UNDER ANY CIRCUMSTANCES, BE LIABLE ON ACCOUNT OF ANY IMPERFECTION, DEVIATION FROM SPECIFICATIONS OR OTHER DEFECT IMPAIRING THE QUALITY, VALUE OR SUITABILITY FOR ANY PURPOSE OF ANY PRODUCT SOLD HEREUNDER, WHETHER PURSUANT TO THE EXPRESS LIMITED WARRANTY OR OTHERWISE, IN NO EVENT SHALL CERTAINTEED BE LIABLE FOR CONSEQUENTIAL, SPECIAL, INCIDENTAL, INDIRECT, PENAL OR CONTINGENT DAMAGES, WHETHER BASED UPON BREACH OF WARRANTY, NEGLIGENCE, STRICT LIABILITY, TORT, BREACH OF CONTRACT, OR ANY OTHER LEGAL THEORY. PURCHASER ASSUMES ALL RISK OF LOSS, DAMAGE OR DELAY INCIDENT TO THE FURNISHING OF ANY PRODUCT BY CERTAINTEED HEREUNDER, OR THE UTILIZATION THEREOF, EXCEPT TO THE EXTENT EXPRESSLY ABOVE PROVIDED. PURCHASER AGREES THIS HAS BEEN NEGOTIATED AND CONSENTS HERETO.

CertainTeed

Type X

Gypsum Board

Product Data and Submittal

Product Description

CertainTeed Type X Gypsum Board is an interior gypsum board consisting of a solid set, fire-resistive, Type X gypsum core enclosed in ivory-colored face paper and a strong liner back paper. CertainTeed Type X board features a specially formulated core providing fire resistance ratings when used in tested assemblies. Long edges are slightly tapered, allowing joints to be reinforced and concealed with joint tape and joint compound. CertainTeed Type X Gypsum Board is available in a variety of lengths and widths.

Basic Uses

CertainTeed Type X Gypsum Board is used for interior walls and ceilings in residential and commercial applications requiring extended fire ratings. It can be used for new construction or renovations over wood or steel framing. The boards are typically nailed or screwed to studs spaced 16" (400 mm) or 24" (610 mm) o.c., but can be applied by laminating or with the use of an adhesive.

Advantages

- Fire ratings up to four hours.
- Consistently high quality.
- Uniformly flat, attractive appearance; no shadows.

- High edge hardness.
- No wavy edges, warps, bows or deformities.
- Uniform high-strength cores eliminate crumbling, cracking.
- Edge tapers consistent to form perfect joints.
- Excellent thermal barrier and sound attenuation qualities.
- Green Guard certified.

Limitations

- Exposure to continuous moisture or extreme temperatures should be avoided. Not recommended for continuous exposure to temperatures exceeding 125°F (52°C).
- Framing spacing should not exceed 24" (610 mm) o.c.
- Should be stored indoors and off ground surface.
- Boards should be stacked flat with care taken to prevent sagging or damage to edges, ends and surfaces.
- Storing board lengthwise, leaning against the framing is not recommended.
- Boards should be carried, not dragged, to place of installation to prevent damaging finished edges.
- Cutting and scoring should be done from the face side.

- In cold weather or during joint finishing, temperatures within the enclosure should stay within the range of 50° to 95°F (10° to 35°C) and with sufficient ventilation to carry off excess moisture.

Product Data

Thicknesses: 5/8" (15.9 mm)

Widths: 4' (1220 mm) standard
54" (1370 mm)

Lengths: 8' to 12'
(2440 mm to 3660 mm)

Weight (nominal): 2.2 psf (10.7 kg/m²)

Edges: Tapered

Packaging: Two pieces per bundle, face-to-face and end-taped

Special widths, lengths or edges may be available on special order. Consult your CertainTeed sales representative.

Technical Data

Composition and Materials

Manufactured panel with gypsum core, encased in paper. Various additives are added to the core to enhance fire resistive qualities.

Continued on back

Job Name

Contractor

Date

Products Specified:

CertainTeed
SAINT-GOBAIN

Surface Burning Characteristics

CertainTeed Type X Gypsum Board has a Flame Spread rating of 15 and Smoke Developed rating of 0, in accordance with ASTM E84, (UL 723, UBC 8-1, NFPA 255, CAN/ULC-S102).

Fire Resistance

Fire resistance tests are conducted in accordance with ASTM E 119, (ANSI/UL 263, UBC 7-1, NFPA 251, CAN/ULC-S101) and no warranty is made other than conformance to the standard under which the assembly was tested. Minor discrepancies may exist in the values of ratings, attributable to changes in materials and standards, as well as differences between testing facilities. Assemblies are listed as "combustible" (wood framing) and "noncombustible" (concrete and/or steel construction). For fire resistance ratings refer to the Gypsum Association Fire Resistance Design Manual and UL Fire Resistance Directory - Vol. 1.

Applicable Standards and References

- ASTM C1396 Type X Standard
- CAN/CSA-A82.27
- ASTM C840
- CAN/CSA-A82.31
- Gypsum Association GA-216
- Gypsum Association GA-214
- ICC International Building Code (IBC)
- ICC International Residential Code (IRC)
- National Building Code of Canada (NBCC)

Installation

Recommendations

Installation of CertainTeed Type X Gypsum Boards should be consistent with methods described in the standards and references noted. Cutting should be from the face side of the boards for best results.

Decoration

CertainTeed Type X Gypsum Board accepts most types of paints, texture and wall covering materials. The surface shall be primed and sealed with a full-bodied latex primer before applying a final

decorative material. This will equalize the suction between the joint compounds and the paper surface.

For best painting results, all surfaces, including joint compound, should be clean, dust-free and not glossy. If glossy paints are used, a thin skim coat of compound over the entire surface, Level 5 finish, is recommended to reduce highlighting or joint photographing. This method is also recommended for areas of critical sidelighting of natural or artificial light sources.

A sealer application under wallpaper or other wall covering is also recommended so the board surface will not be damaged if the covering is subsequently removed during redecorating. Joint treatment must be thoroughly dry before proceeding with primer-sealer application and final decoration.

Notice

The information in this document is subject to change without notice. CertainTeed assumes no responsibility for any errors that may inadvertently appear in this document.



CertainTeed Corporation

ROOFING • SIDING • TRIM • DECKING • RAILING • FENCE • GYPSUM • CEILINGS • INSULATION

20 Moores Road Malvern, Pa 19355 Professionals: 800-233-8990 Consumer: 800-782-8777 certainteed.com

CertainTeed

Type C

Gypsum Board

Product Data and Submittal

Product Description

CertainTeed Type C Gypsum Board is an interior gypsum board consisting of a solid set, fire-resistive, Type C gypsum core enclosed in ivory-colored face paper and a strong liner back paper. CertainTeed Type C board features a specially formulated Type X core providing superior fire performance when used in specific fire-rated Type C assemblies. Long edges are slightly tapered, allowing joints to be reinforced and concealed with joint tape and joint compound. CertainTeed Type C Gypsum Board is available in a variety of lengths and widths.

Basic Uses

CertainTeed Type C Gypsum Board is used for interior walls and ceilings in residential and commercial applications requiring extended fire ratings. It can be used for new construction or renovations over wood or steel framing. They are typically nailed or screwed to studs spaced 16" (400 mm) or 24" (610 mm) o.c., but can be applied by laminating or with the use of an adhesive.

Advantages

- UL / cUL / ULC fire rated assemblies up to four hours.
- Consistently high quality.
- Uniformly flat, attractive appearance; no shadows.
- High edge hardness.
- No wavy edges, warps, bows or deformities.
- Uniform high-strength cores eliminate crumbling, cracking.
- Edge tapers consistent to form perfect joints.
- Excellent thermal barrier and sound attenuation qualities.
- GREENGUARD Gold Certified
- In cold weather or during joint finishing, temperatures within the enclosure should stay within the range of 50° to 95°F (10° to 35°C) and with sufficient ventilation to carry off excess moisture.
- CertainTeed Type C can be substituted in an equivalent thickness in any fire-resistance rated assembly specifying Type X.
- Where CertainTeed Type C is specified to attain a fire resistance rating, CertainTeed Type X of equivalent thickness cannot be substituted.

Limitations

- Exposure to continuous moisture or extreme temperatures should be avoided. Not recommended for continuous exposure to temperatures exceeding 125° F (52° C).
- Framing spacing should not exceed 24" (610 mm) o.c.
- Should be stored indoors and off ground surface.
- Boards should be stacked flat with care taken to prevent sagging or damage to edges, ends and surfaces.
- Storing board lengthwise leaning against the framing is not recommended.
- Boards should be carried, not dragged, to place of installation to prevent damaging finished edges.
- Cutting and scoring should be done from the face side.

Product Data

Thickness: 1/2" (12.7 mm)
5/8" (15.9 mm)

Width: 4' (1220 mm) standard

Length:
1/2" – 12' (3660mm) Standard
5/8" – 8', 9', 10', 12' (2440, 2740, 3050, 3660 mm) Standard

Weight (nominal):
1/2" (12.7 mm) – 1.9 psf (9.3 kg/m²)
5/8" (15.9 mm) – 2.3 psf (11.2 kg/m²)

Edge: Tapered, paper bound – factory finished

Packaging: Two pieces per bundle, face-to-face and end-taped

Special lengths or edges may be available as a special order. Please contact your CertainTeed Representative.

Continued on back

Job Name

Contractor

Date

Products Specified:

CertainTeed
SAINT-GOBAIN

Technical Data

Surface Burning Characteristics

CertainTeed Type C Gypsum Board has a Flame Spread rating of 15 and Smoke Developed rating of 0, in accordance with ASTM E84, (UL 723, NFPA 255, CAN/ULC-S102).

Fire Resistance

Fire resistance tests are conducted in accordance with ASTM E119, (ANSI/UL 263, NFPA 251, CAN/ULC-S101) and no warranty is made other than conformance to the standard under which the assembly was tested. Minor discrepancies may exist in the values of ratings, attributable to changes in materials and standards, as well as differences between testing facilities. Assemblies are listed as "combustible" (wood framing) and "noncombustible" (concrete and/or steel construction).

For fire resistance rating, refer to the Gypsum Association Fire Resistance Design Manual and UL Fire Resistance Directory – Vol. 1 or ULC Fire Resistance List of Equipment and Materials.

UL / cUL / ULC Type Designation listed in Fire Resistance Directories - Type C.

CertainTeed Type C meets and exceeds the Type X requirements of ASTM C1396 and CAN/CSA-A82.27.

Applicable Standards and References

- ASTM C1396
- ASTM C840
- CAN/CSA-A82.31
- Gypsum Association GA-216
- Gypsum Association GA-214
- ICC International Building Code (IBC)
- National Building Code of Canada (NBCC)
- Meets and exceeds Type X requirements

Installation

Recommendations

Installation of CertainTeed Type C Gypsum Boards should be consistent with methods described in the standards and references noted. Cutting should be from the face side of the boards for best results.

Decoration

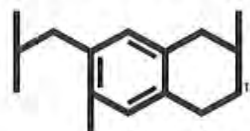
CertainTeed Type C Gypsum Board accepts most types of paints, texture and wall covering materials. The surface shall be primed and sealed with a full-bodied latex primer before applying a final decorative material. This will equalize the suction between the joint compounds and the paper surface.

For best painting results, all surfaces, including joint compound, should be clean, dust-free and not glossy. If glossy paints are used, a thin skim coat of compound over the entire surface, Level 5 finish, is recommended to reduce highlighting or joint photographing. This method is also recommended for areas of critical sidelighting of natural or artificial light sources.

A sealer application under wallpaper or other wall covering is also recommended so the board surface will not be damaged if the covering is subsequently removed during redecorating. Joint treatment must be thoroughly dry before proceeding with primer-sealer application and final decoration.

Notice

The information in this document is subject to change without notice. CertainTeed assumes no responsibility for any errors that may inadvertently appear in this document.



Health Product
DECLARATION

The Health Product Declaration™ and logo is owned by the Health Product Declaration Collaborative™ and is used with permission.



CertainTeed Corporation

ROOFING • SIDING • TRIM • DECKING • RAILING • FENCE • GYPSUM • CEILINGS • INSULATION

20 Moores Road Malvern, Pa 19355 Professional: 800-233-8990 Consumer: 800-782-8777 certainteed.com

CertainTeed Easi-Lite

Lightweight Gypsum Board

Product Data and Submittal

Product Description

Easi-Lite® Gypsum Board is a specially formulated interior gypsum board that is up to 30% lighter than traditional 1/2" (12.7 mm) CertainTeed regular boards. It is comprised of a special, sag-resistant solid set gypsum core enclosed in 100% recycled face and back paper. Easi-Lite Gypsum Board is light weight, easy to handle and ideal for wall and ceiling applications up to 24" o.c. (610 mm) framing spacing.

Basic Uses

Easi-Lite Gypsum Board is used for interior walls and ceilings in standard residential or commercial applications. It can be used for new construction or renovations over wood or steel framing. It is typically nailed or screwed to studs spaced 16" (405 mm) or 24" (610 mm) o.c., but can be applied by laminating or with the use of an adhesive.

Advantages

- Up to 30% lighter than standard gypsum board.
- Easy to lift, carry and install
- Can be used on ceilings with 24" (610 mm) o.c. frame spacing (perpendicular to framing) when water based texture is applied
- Scores and snaps with less dust
- GREENGUARD GOLD certified

Product Data

Sizes and Types

Thicknesses: 1/2" (12.7 mm)

Weight: 1.2 - 1.4 psf (5.9 - 6.8 kg/m²)

Widths: 4' (1220 mm) standard
54" (1375 mm)

Lengths: 8' (2440 mm) to
12' (3660 mm)

Edges: Tapered

Packaging: Two pieces per bundle, face-to-face and end-taped

Special lengths or edges may be available on special order. Consult a CertainTeed sales representative.

Limitations

- Exposure to continuous moisture or extreme temperatures should be avoided. Not recommended for continuous exposure to temperatures exceeding 125° F (52° C)
- Wall and ceiling framing spacing should not exceed 24" (610 mm)
- Store indoors and off ground surface
- For ceiling applications, apply Easi-Lite perpendicular to framing 24" (610 mm) o.c.
- Boards should be stacked flat with care taken to prevent sagging or damage to edges, ends and surfaces
- Storing board lengthwise leaning against the framing is not recommended
- Boards should be carried, not

- dragged, to place of installation to prevent damaging finished edges
- Cutting and scoring should be done from the face side
- In cold weather or during joint finishing, temperatures within the enclosure should stay within the range of 50° to 95°F (10° to 35°C) and with sufficient ventilation to carry off excess moisture

Technical Data

Surface Burning Characteristics

All CertainTeed gypsum board has a Flame Spread rating of 15 and Smoke Developed rating of 0, in accordance with ASTM E84, (UL 723, NFPA 255, CAN/ULC-S102).

Applicable Standards:

ASTM C1396 and CAN/CSA-A82.27

Installation

Applicable Standards and References

- Applicable Standards and References
- ASTM C840
- CAN/CSA-A82.31
- Gypsum Association GA-216
- Gypsum Association GA-214
- ICC International Building Code (IBC)
- ICC International Residential Code (IRC)
- National Building Code of Canada (NBCC)

(Continued on back)

Job Name _____

Contractor _____

Date _____

Products Specified: _____

CertainTeed
SAINT-GOBAIN

Decoration

CertainTeed Easi-Lite® Gypsum Board accepts most types of paints, texture and wall covering materials. The surface shall be primed and sealed with a full-bodied latex primer before applying a final decorative material. This will equalize the suction between the joint compounds and the paper surface. For best painting results, all surfaces, including joint compound, should be clean, dust-free and not glossy.

If latex paints are used, a thin skim coat of compound over the entire surface, Level 5 finish, is recommended to reduce highlighting or joint photographing. This method is also recommended for areas of critical sidelighting of natural or artificial light sources. A sealer application under wallpaper or other wall covering is also recommended so the board surface will not be damaged if the covering is subsequently removed during

redecorating. Joint treatment must be thoroughly dry before proceeding with primer-sealer application and final decoration.

Notice

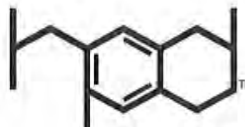
The information in this document is subject to change without notice. CertainTeed assumes no responsibility for any errors that may inadvertently appear in this document.

Characteristics, properties or performance of materials or systems manufactured by CertainTeed herein described are derived from data obtained under controlled test conditions. CertainTeed makes no warranties, express or implied, as to their characteristics, properties or performance under any variations from such conditions in actual construction. CertainTeed assumes no responsibility for the effects of structural movement.

™ & © CertainTeed and the tag line "Quality made certain. Satisfaction guaranteed." are trademarks of CertainTeed Corporation. All other trademarks are the property of its affiliates and related companies.

NOTICE: The information in this document is subject to change without notice. CertainTeed assumes no responsibility for any errors that may inadvertently appear in this document.

The Health Product Declaration™ and logo is owned by the Health Product Declaration Collaborative™ and is used with permission.



Health Product
DECLARATION

The Health Product Declaration™ and logo is owned by the Health Product Declaration Collaborative™ and is used with permission.



CertainTeed Corporation

ROOFING • SIDING • TRIM • DECKING • RAILING • FENCE • GYPSUM • CEILINGS • INSULATION

20 Moores Road Malvern, Pa 19355 Professional: 800-233-8990 Consumer: 800-782-8777 certainteed.com

CertainTeed

Easi-Lite™

Lightweight Gypsum Board



CertainTeed
SAINT-GOBAIN

Lighter weight – Less strain – Less fatigue

Up to 30% lighter
than standard
wallboard.



Easi-Lite™ Lightweight Gypsum Board

Easi-Lite™ Gypsum Board is a specially formulated interior gypsum board that is up to 30% lighter than traditional 12.7 mm (1/2") CertainTeed Regular board. It is comprised of a special, solid set gypsum core enclosed in recycled face and back paper. Easi-Lite Gypsum Board is light weight, easy to handle and ideal for wall applications.

The Easi-Lite™ Advantage:

- Up to 30% lighter – easy to lift, carry and install which results in faster installation
- Uniform high-strength, gypsum core with 100% recycled face and back paper
- Scores and snaps with less dust
- GREENGUARD Children & SchoolsSM Certified
- Solid, strong edge hardness – tapered edges for perfect joints
- Uniform high-strength core eliminates crumbling, cracking



NEW



Introducing Easi-Lite™ Interior Ceiling Board

Easi-Lite™ Lightweight Interior Ceiling Gypsum Board consists of a solid set, gypsum core enclosed in ivory-colored face paper and a strong liner back paper, for use on interior ceilings where framing is spaced up to 610 mm (24") o.c. The gypsum core is comprised of special high strength, sag-resistant additives. Lighter weight and superior sag resistance make Easi-Lite Interior Ceiling Board ideal for ceiling applications.

The Easi-Lite™ Interior Ceiling Board Advantage:

- Up to 30% lighter in weight, with up to 25% better sag resistance than other lightweight boards
- Easy to lift and stock projects quicker
- Lighter weight relates to less fatigue during installation
- Edge tapers consistent to form perfect joints
- Excellent thermal barrier and sound attenuation qualities
- For wall or ceiling applications up to 610 mm (24") o.c.



Sustainability



- Up to 99% recycled material
- Lighter boards reduce transportation fuel needs
- Results in reduced carbon footprint from transportation

Dematerialization means more efficient use of raw material resources



Easi-Lite™ Lightweight Gypsum Board is excellent for wall applications. For a full interior complement, Easi-Lite Interior Ceiling Board is specially designed for ceiling applications.

Sizes and Types Available

	Easi-Lite™ Gypsum Board	Easi-Lite™ Interior Ceiling Board
Product Standards:	ASTM C 1396, Section 5 CAN/CSA-A82.27	ASTM C 1396, Section 12 CAN/CSA-A82.27
Thicknesses:	12.7 mm (1/2")	12.7 mm (1/2")
Weight:	5.9 - 6.8 kg/m ² (1.2 - 1.4 psf)	5.9 - 6.8 kg/m ² (1.2 - 1.4 psf)
Widths:	1220 mm (4') standard 1370 mm (54")	1220 mm (4')
Lengths:	2440 mm (8'), 2745 mm (9'), 3050 mm (10'), 3660 mm (12')	2440 mm (8'), 3050 mm (10'), 3660 mm (12')
Edges:	Tapered	Tapered
Installation:	Vertical or horizontal to framing	610 mm (24") o.c. frame spacing (installed perpendicular to framing) when water-based texture is applied

Special lengths or edges may be available on special order. Consult your CertainTeed Gypsum sales representative.



Easi-Lite™ For Walls



Easi-Lite™ For Interior Ceilings



ASK ABOUT ALL OF OUR OTHER CERTAINTEED® PRODUCTS AND SYSTEMS:

ROOFING • SIDING • TRIM • DECKING • RAILING • FENCE • FOUNDATIONS
GYPSUM • CEILINGS • INSULATION • PIPE

www.certainteed.com/Easi-Lite <http://blog.certainteed.com>

CertainTeed Corporation
P.O. Box 860
Valley Forge, PA 19482

Professional: 800-233-8990
Consumer: 800-782-8777

©12/11 CertainTeed Gypsum Canada, Inc. Printed in Canada.
Printed on recycled paper. ♻️ CTG-2541/1M/12-2011
Easi-Lite is a trademark of Saint-Gobain Placo. CertainTeed is a registered trademark of CertainTeed Corporation.



CertainTeed



GlasRoc® Tile Backer / GlasRoc® Tile Backer Type X

Lifetime Limited Residential Warranty

What is Covered?

CertainTeed Gypsum, Inc. ("CertainTeed") warrants that its **Diamondback**® Tile Backer ("Product") shall be free from defects in the manufacture of materials that make it unsuitable for its intended use.

The Lifetime Limited Warranty may not be assigned or transferred. It is extended only to the original owner of the residential building.

A residential building is defined as a single family residence or other structure that serves as permanent residence for less than five family units. The original Owner is defined as the original purchaser of the Product who installs the product or a person who resides in the residential building where the product has been installed and was the owner of the residential building at the time when installation of the Product was completed.

What is Not Covered?

CertainTeed shall not be responsible for any loss resulting from any of the following:

- Installation and finishing practices not in accordance with CertainTeed's published recommendations and specifications or industry standards defined by the Tile Council of North America, Inc.
- Failure of or defects in materials to which the Product is attached or which are attached to it. This includes any damage to the Product resulting from the installation, repair or removal of any materials installed over, adjacent to, or attached to the Product, except to the extent that repair or removal of such materials is a direct result of a failure of the Product to comply with this Limited Warranty.
- Failure of the owner to maintain the residence with reasonable care and to protect the Product from being subjected to more than normal use and exposure within the residential building.
- Claims related to mold, mildew, algae, fungus, bacteria, insects or other conditions involving organic growth.
- Failure to purchase and install the Product within 12 months from its date of manufacture.
- Use of the Product in other than its intended use.
- Any acts, omissions, or negligence of Owner or any third party.
- Damage due to improper building or system design.
- Damage or abuse caused by improper transport, handling, or storage not in accordance with standard building practices and applicable building codes.
- Damage from immersion in water or sustained pooling or cascading of water; hurricanes, floods, fires, vandalism, hailstorms, earthquakes, high winds, tornadoes, falling objects, settling of the building, movement of the framing members, failure or distortion in the walls or foundation of the structure; or other acts of God or nature.

The Product has natural surface characteristics and other characteristics that result normally from its manufacture that are not to be considered defects or evidence of this warranty.

Effect of State Law

THIS WARRANTY STATES THE FULL EXTENT OF CERTAINTEED'S RESPONSIBILITY FOR DEFECTS IN THE PRODUCT. ALL OTHER REPRESENTATIONS AND WARRANTIES EITHER EXPRESSED OR IMPLIED, INCLUDING WARRANTIES OF FITNESS FOR A PARTICULAR PURPOSE OR MERCHANTABILITY, ARE HEREBY DISCLAIMED.

IN NO EVENT SHALL CERTAINTEED BE LIABLE FOR LOSS OF PROFITS OR ANY CONSEQUENTIAL, SPECIAL, INCIDENTAL, INDIRECT OR PUNITIVE DAMAGES, WHETHER BASED UPON BREACH OF WARRANTY NEGLIGENCE, STRICT LIABILITY, TORT, BREACH OF CONTRACT, OR ANY OTHER LEGAL THEORY.

Some states do not allow the exclusion or limitation of warranties or do not allow the exclusion or limitation of incidental or consequential damages, so the above disclaimers may not apply to you.

How long does Coverage last?

The Lifetime Limited Residential Warranty shall commence with the date of purchase and extend for the life of the Owner. This Warranty is non-transferable.

What will CertainTeed do?

CertainTeed will, at its option, provide replacement product or refund the original owner the reasonable cost of repairing the non-conforming **Diamondback** Tile Backer and any portion of the tile assembly that may be affected, up to a maximum of two times the price paid for the Product at the time of purchase for installation.

This offer will commence on the date of purchase and continue for five (5) years. Claims made after year five (5) that are determined by CertainTeed to include non-conforming **Diamondback** Tile Backer will be reimbursed at the original uninstalled purchase price.

To make a claim:

To effect this sole and exclusive remedy, the claim must be submitted in writing prior to the end of the warranty period.

Submit all claims in writing within 30 days of defect discovery, including a brief description of the damaged area with a copy of the dated sales receipt, invoice or evidence of installation date to:

CertainTeed Gypsum
Attn: Marketing Manager
4300 W. Cypress St., Ste. 500
Tampa, FL 33607
U.S.A.
Phone: 800 233-8990

CertainTeed, upon their request, shall have 30 days from receipt of the claim to inspect the **Diamondback** Tile Backer. CertainTeed must be granted reasonable access for inspection. No alterations or repairs shall be made prior to CertainTeed's inspection.

THIS SHALL CONSTITUTE THE TOTAL LIABILITY OF CERTAINTEED AND THE EXCLUSIVE REMEDY OF CUSTOMER. THERE ARE NO OTHER WARRANTIES, EXPRESSED OR IMPLIED, INCLUDING ANY WARRANTY OF MERCHANTABILITY OR FITNESS FOR A PARTICULAR PURPOSE.

No representative of CertainTeed has the authority to make any representation or promise with respect to this limited warranty or otherwise amend, restate, or supplement this limited warranty.

CertainTeed
SAINT-GOBAIN

CertainTeed Gypsum, Inc., 4300 W. Cypress St., Suite 500, Tampa, FL 33607

CertainTeed



Product Data and Submittal

Product Description

Diamondback® Tile Backer is used behind tiles in interior wet areas such as bathrooms, laundries, utility rooms and kitchens. Diamondback products consist of a high performance, water-resistant gypsum board produced with CertainTeed's patented, proprietary Embedded Glass Reinforced Gypsum® (EGRG®) Technology. Tile can be directly applied, eliminating the need for surface sealants, skim adhesive coats or waterproofing membranes. 1/4" (6.4 mm) Diamondback Tile Backer is suitable for use as an underlayment for countertops and residential and light commercial flooring applications. Diamondback Tile Backer Type X provides the same moisture resistance as Diamondback Tile Backer, plus it has a specially formulated core for use in fire resistance-rated designs. Diamondback Tile Backer and Diamondback Tile Backer Type X are available in a variety of sizes to meet various applications requirements.

Basic Uses

Diamondback Tile Backer and Diamondback Tile Backer Type X Boards are used in interior wet areas, non-wet areas, high-humidity areas and are typically used for adhering ceramic tiles to walls and floors in bathrooms, in shower and tub enclosure walls, kitchens, laundry and utility rooms. They may be used for walls and ceilings, countertops, floors and as a wall backing for laminate-faced panels or fiberglass tub and shower units to provide impact, fire and sound resistance.

Advantages

- Scores and snaps like standard gypsum board.
- Mold resistant rating of 10 (no mold) when tested per ASTM D3273.

- Up to 50% lighter weight than cement backer boards and up to 20% lighter weight than other ASTM C1178 gypsum tile backer boards.
- The proprietary moisture barrier face eliminates need for an additional moisture/vapor retarder.
- Lifetime limited warranty for residential tile installations.
- 20 year limited warranty for commercial tile installations
- Tile can be applied directly with latex-portland cement mortar.
- Consistently high quality.
- Uniform edge and field hardness.

When storing boards for extended periods of time, cumulative pressure on unsupported lower units causes gypsum board to sag. For 4' x 8' (1220 mm x 2440 mm) boards, four inch (100 mm) wide risers (separators) should be spaced evenly at 28 inches (700 mm), then 24 inches (600 mm) for the next lift, followed by 28 inches (700 mm) for the next lift spacing across the 8' (2440 mm) length of the board. A good stock rotation and inventory control plan will help avoid minor sagging. 3' x 5' (915 x 1525 mm) boards are palletized without risers (separators).

Limitations

- Not recommended for continuous exposure to temperatures exceeding 125°F (52°C).
- Boards should be stacked flat with care taken to prevent sagging or damage to edges, ends and surfaces.
- Storing board lengthwise leaning against the framing is not recommended.
- Boards should be carried, not dragged, to place of installation to prevent damaging edges.

- Cutting and scoring should be done from the textured colored face side.
- In cold weather, temperatures within the enclosure should stay within the range of 50° to 95°F (10° to 35°C) and with sufficient ventilation to carry off excess moisture.

Composition and Materials

Manufactured panel with water-resistant EGRG core. Diamondback Tile Backer Type X has a specially formulated core for use in fire resistance-rated designs.

Sizes and Types

Thicknesses:	Weight, Lbs./Sq.Ft.(Kg/m ²):
1/4" (6.4 mm)	1.6 (7.8)
1/2" (12.7 mm)	1.6 (7.8)
5/8" (15.9 mm)	2.4 (11.7)

Thickness x Width x Length:

1/4" x 3' x 5' (6.4 mm x 915 mm x 1525 mm)
1/4" x 4' x 4' (6.4 mm x 1220 mm x 1220 mm)
1/2" x 32" x 5' (12.7 mm x 815 mm x 1525 mm)
1/2" x 3' x 5' (12.7 mm x 915 mm x 1525 mm)
1/2" x 4' x 5' (12.7 mm x 1220 mm x 1525 mm)
1/2" x 4' x 8' (12.7 mm x 1220 mm x 2440 mm)
5/8" x 4' x 5' (15.9 mm x 1220 mm x 1525 mm)
5/8" x 4' x 8' (15.9 mm x 1220 mm x 2440 mm)

Edges: Square

Packaging: Stacked face to back with no end tapes

Special lengths may be available on special order. Consult your nearest CertainTeed sales representative.

(Continued on back)

Job Name

Contractor

Products Specified:

Date

CertainTeed
SAINT-GOBAIN

Applicable Standards

Diamondback® Tile Backer meets ASTM C 1178 requirements; Diamondback Tile Backer Type X meets ASTM C 1178 Type X requirements.

1/4" (6.4 mm) Diamondback Tile Backer has passed the ASTM C 627 Robinson Floor Test for residential and light commercial floors. This includes TCNA Recognition for specific Floor Systems.

- Diamondback has achieved GREENGUARD GOLD® Certification.

Technical Data

Surface Burning Characteristics

Diamondback Tile Backer achieves a Class A rating when tested in accordance with ASTM E 84 (UL 723, CAN/ULC-S102).

Fire Resistance

Fire resistance tests are conducted in accordance with ASTM E119, (ANSI/UL 263, CAN-ULC-S101) and no warranty is made other than conformance to the standard under which the assembly was tested. Minor discrepancies may exist in the values of ratings, attributable to changes in materials and standards, as well as differences between testing facilities. Assemblies are listed as "combustible" (wood framing) and "noncombustible" (concrete and/or steel construction).

Diamondback Tile Backer Type X (UL designation: Type EGRG or GlasRoc) is Classified by Underwriters Laboratories Inc. for USA and Canada. Ratings are applicable with or without tile. For fire resistance ratings, refer to the Gypsum Association Fire Resistance Design Manual GA-600 and UL Fire Resistance Directory-Vol.1.

Installation

Applicable Standards and References

- ASTM C1178
- Gypsum Association GA-216
- Gypsum Association GA-214
- CAN/CSA-A82.31
- Tile Council of North America's TCNA Handbook for Ceramic, Glass, and Stone Tile Installation
- ANSI's American National Standard Specifications for the Installation of Ceramic Tile

Framing

Installation of Diamondback Tile Backer and Diamondback Tile Backer Type X should be consistent with methods described in the standards and references noted. Framing members shall be plumb, true and firmly secured. If necessary, studs around tub enclosures and shower stalls should be furred so the inside lip of the fixture is flush with the face of the Diamondback Tile Backer. The top of the furring should be even with the upper edge of the tub or shower pan.

When used as a tile substrate for walls, minimum 20-gauge steel or wood framing, spacing should not exceed 16" (400 mm) o.c. without blocking for 1/2" (12.7 mm); or 24" (610 mm) o.c. with blocking for 1/2" (12.7 mm) and 24" o.c. for 5/8" (15.9 mm).

When used as a tile substrate for ceilings, apply perpendicular to framing spaced a maximum 12" (300 mm) o.c. for 1/2" (12.7 mm) and 16" (400 mm) o.c. for 5/8" (15.9 mm). Always provide appropriate blocking, headers or supports for tub, plumbing fixtures, soap dishes, grab bars, towel racks, etc.

Placing Fixtures

Waterproof receptors, pans, or sub pans shall have upstanding lip or flange not less than 1" (25 mm) higher than the water dam or threshold of shower entry way, and shall be installed prior to erection of Diamondback Tile Backer.

Install a temporary strip or shim which, when removed, will provide a 1/4" (6 mm) clearance between the Diamondback Tile Backer and the lip of the tub or shower receptor.

Applying the Diamondback Tile Backer Board

Apply the Diamondback Tile Backer horizontally to minimize butt joints. Glass-reinforced edge should abut the top edge of the temporary strip or shim.

For fire or sound-rated construction, Diamondback Tile Backer should extend full height, floor-to-ceiling, behind tub and/or shower enclosures.

Fasten the 1/2" (12.7 mm) board with 1-1/2" (38 mm) galvanized roofing nails, 6" (150 mm) o.c., or 1-1/2" (38 mm) corrosion resistant backerboard screws, 6" (150 mm) o.c. Drive nails and screws flush with surface. Do not countersink fasteners.

In areas to be tiled; joints and corners shall be treated with nominal 2" (50 mm) alkali-resistant fiberglass mesh tape embedded in a skim coat of the tile setting material. Do not use regular joint compound and paper tape.

Caulk/seal penetrations around pipes, fixtures, etc., and where Diamondback Tile Backer butts against dissimilar materials with a waterproof, flexible sealant or tile adhesive.

Applying Tile

Apply a tile setting material to the textured coated face only using a latex/polymer modified thinset meeting ANSI A118.4.

All tile joints shall be completely and continuously grouted.

Tile should be applied down to the top edge of the shower floor surfacing material, or the return of the shower pan, and extend over tub lip. The tile shall completely cover the following areas, including all joints and corners:

- Over tubs without shower heads — minimum of 6" (150 mm) above rim of tub.
- Over tubs with showers — minimum of 5" (1525 mm) above rim or 6" (150 mm) above shower head, whichever is higher.
- Surfacing material shall be applied to the full specified height for a distance of not less than 4" (100 mm) beyond the outside face of the tub or receptor. Areas beyond an outside corner are excluded.

Fill space between fixtures and the tile with a flexible sealant.

For application of plastic-finished rigid wall panels, recommendations of the panel manufacturer should be followed.

Countertops

See Diamondback Tile Backer product brochure for countertop tile backer applications.

Residential and Light Commercial Floors

See Diamondback Tile Backer product brochure for interior floor tile applications.

Covered by U.S. Patent No. 6,524,679; 6,878,321; 6,866,492; and other patents pending.



® CertainTeed is a trademark of CertainTeed Corporation. All other trademarks are the property of CertainTeed's affiliates and related companies.

NOTICE: The information in this document is subject to change without notice. CertainTeed assumes no responsibility for any errors that may inadvertently appear in this document.

ASK ABOUT ALL OF OUR OTHER CERTAINTEED® PRODUCTS AND SYSTEMS:

ROOFING • SIDING • TRIM • DECKING • RAILING • FENCE
GYPSUM • CEILINGS • INSULATION

www.certainteed.com <http://blog.certainteed.com>

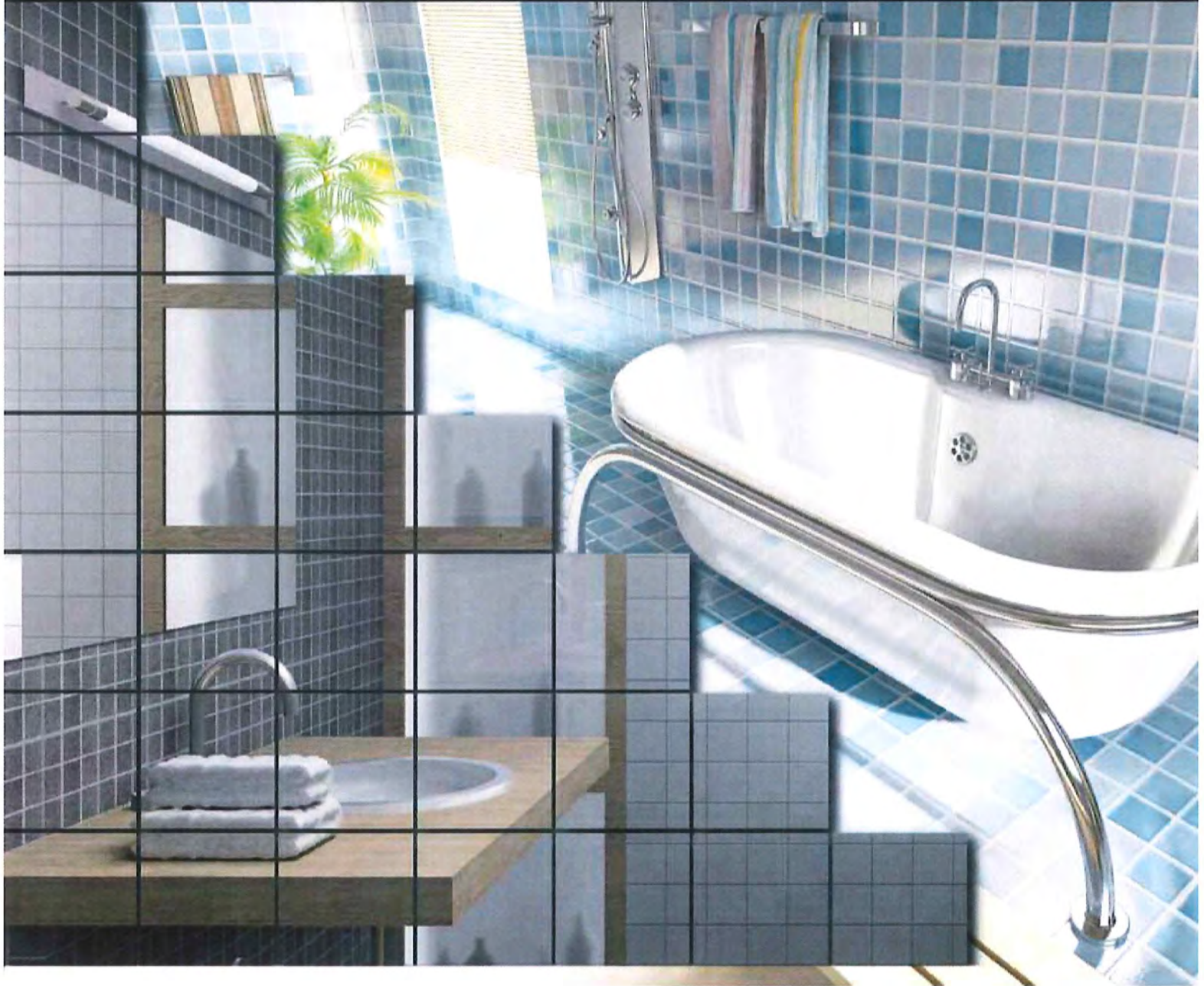
CertainTeed Corporation
P.O. Box 860
Valley Forge, PA 19482

Professional: 800-233-8990
Consumer: 800-782-8777

CertainTeed

Diamondback[®]

GlasRoc[®] Tile Backer



CertainTeed
SAINT-GOBAIN



Diamondback[®] GlasRoc[®] Tile Backer

Product Overview

Diamondback[®] Tile Backer is a superior tile substrate for walls and ceilings, especially designed by CertainTeed to meet the demands of high-moisture areas. Diamondback 1/4" Tile Backer (6.4 mm) is suitable for use as an underlayment for tile countertops and floor applications. With an innovative, built-in moisture-blocking coating that resists moisture at the surface, Diamondback Tile Backer protects tile installations and wall cavities from moisture intrusion and excessive vapor transfer thereby eliminating the need for a separate moisture barrier. Because paperless tile backer boards provide increased mold resistance, Diamondback Tile Backer is well-suited for tile and non-tile installations in wet and non-wet applications, areas of high humidity and for fire-rated assemblies.



Diamondback[®] Sample

Features

- Specially formulated water-resistant core.
- Excellent fire-resistance properties, and numerous fire-rated designs.
- Conformity to design and code requirements.
- Lifetime Limited Warranty for residential applications.
- 20 Year Limited Warranty for commercial applications.
- Meets ASTM C 1178, which is recognized by the Tile Council of North America (TCNA).
- Meets ASTM C 627 Robinson Floor Test for use as underlayment [1/4" (6.4 mm)]
- Reduced surface alkalinity versus conventional cement board.

Advantages

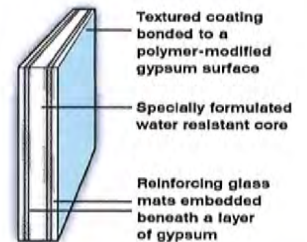
- The unique texture coating and pattern design create a superior bond between the board surface and tile adhesive that helps prevent tile slippage during installation.
- A superior water-resistant surface that inhibits water vapor permeance.
- Mold resistance rating of 10 when tested in accordance with ASTM D 3273.
- Up to 50% lighter weight than cement backer boards and up to 20% lighter weight than other ASTM C 1178 gypsum tile backer boards.
- Cuts like regular gypsum board and is easy to handle and install – with minimal skin irritation due to embedded glass mats.
- Low VOCs; GREENGUARD Children and SchoolsSM Certified.



GlasRoc[®] Products – Superior Technology

CertainTeed's GlasRoc[®] products feature unique Embedded Glass Reinforced Gypsum[®] (EGRG[®]) technology. This patented^{*} technology combines a protective coating on the face, with reinforced glass mats embedded into a water-resistant gypsum core, positioned beneath a polymer-modified gypsum surface. The GlasRoc offering provides:

- Water-resistant, paperless surface that is designed to meet the requirements of the application.
- Numerous fire-rated assembly designs for safety and performance.
- Moisture and mold resistance for protection and durability.
- Lightweight and designed to cut like regular gypsum board for ease of installation.



^{*}Covered by U.S. Patent No. 6,524,679; 6,878,321; 6,866,492; and other patents pending.

Technical Properties

Properties	Diamondback® Tile Backer 1/4" (6.4 mm)	Diamondback® Tile Backer 1/2" (12.7 mm)	Diamondback® Tile Backer Type X 5/8" (15.9 mm)
Sizes Available*	3' x 5' (915 mm x 1525 mm) 4' x 4' (1220 mm x 1220 mm)	32" x 5' (815 mm x 1525 mm) 3' x 5' (915 mm x 1525 mm) 4' x 5' (1220 mm x 1525 mm) 4' x 8' (1220 mm x 2440 mm)	4' x 5' (1220 mm x 1525 mm) 4' x 8' (1220 mm x 2440 mm)
Weight - Lbs/Sq.Ft. (Kg/m ²)	1.6 (7.8)	1.6 (7.8) ****	2.4 (11.7)
Flame Spread/Smoke Developed**	less than 25/50	less than 25/50	less than 25/50
Mold Resistance Rating**	10	10	10
Standard Specification	ASTM C 1178	ASTM C 1178	ASTM C 1178

* Other lengths available. Ask your CertainTeed sales representative.

** No mold growth detected. Note that 10 is highest rating possible.

*** Tested per ASTM E 84, CANULC-S102.

**** Improved lighter weight formulation.

Code Compliance and Testing Standards

Diamondback® Tile Backer is IRC, IBC and National Building Code of Canada compliant in 1/4" (6.4 mm), 1/2" (12.7 mm) and 5/8" (15.9 mm) thicknesses and meets ASTM C 1178 as a glass mat water-resistant gypsum backing panel for use as a tile backer, as recognized by the Tile Council of North America (TCNA).

The TCNA recommends the use of a moisture barrier behind cement backer boards in wet areas; however, Diamondback Tile Backer has a built-in moisture barrier that stops moisture at the surface, thereby eliminating the need for an additional barrier.

Mold Resistance Test - When tested in accordance with ASTM D 3273, Diamondback Tile Backer exhibited no evidence of mold or fungal growth after a period of 28 days of exposure, yielding a rating of 10, the best level of performance for mold resistance.

Under certain job site conditions, mold resistance for building products may produce different results than those achieved in a controlled, laboratory setting; however, when handled properly, using appropriate design methods and construction practices, CertainTeed's Embedded Glass Reinforced Gypsum* (EGRG®) Technology provides increased mold resistance compared to standard moisture resistant paper faced wallboard.

Diamondback Tile Backer meets ASTM C 1178, which is referenced by the Tile Council of North America (TCNA).

1/4" (6.4 mm) Diamondback Tile Backer has passed the ASTM C 627 Robinson Floor Test for residential and light commercial floors. This includes TCNA Recognition for specific Floor Systems.

Contents:

Product Overview	2
Technical Properties	3
Code Compliance and Testing	3
Floors	4
Tub/Shower Walls or Ceilings . . .	4-5
Countertops	6
Non-Tile Walls or Ceilings	6
Fire-Rated Assemblies	7

Through the responsible development of innovative and sustainable building products, CertainTeed has helped shape the building products industry for more than 100 years. Founded in 1904 as General Roofing Manufacturing Company, the firm's slogan "Quality Made Certain, Satisfaction Guaranteed," quickly inspired the name CertainTeed. Today, CertainTeed® is North America's leading brand of exterior and interior building products, including roofing, siding, fence, decking, railing, trim, foundations, pipe, insulation, gypsum, ceilings and access covers.



Bathtub and Shower Walls, Ceilings and Floors

Walls or Ceilings

When using Diamondback® Tile Backer as a tile substrate in residential wall applications, panels should be installed with the textured side facing the interior. Tiles should always be applied to the textured side.

Diamondback Tile Backer can be scored and cut with a standard utility knife and requires no special tools. Working from the textured side, pieces snap after scoring only one face. After cutting panels to required size, make cutouts and then snug fit ends and edges, being certain not to leave gaps between panels.

When used as a tile substrate for walls, minimum 20-gauge steel or wood framing should not exceed 16" (400 mm) o.c. without blocking for 1/2" (12.7 mm); or 24" (610 mm) o.c. for 5/8" (15.9 mm). Panels can be applied horizontally or vertically.

When used as a tile substrate for ceilings, panels should be applied perpendicular to framing. Framing should be spaced no greater than 12" (300 mm) o.c. for 1/2" (12.7 mm) thickness or 16" (400 mm) o.c. for 5/8" (15.9 mm) thickness. For walls and ceilings, fasteners should be spaced 6" (150 mm) o.c. on wood and metal framing. Drive fasteners flush with textured surface and do not countersink. Use 1-1/2" (38 mm) galvanized roofing nails for 1/2" (12.7 mm) and 1-3/4" (44 mm) for 5/8" (15.9 mm) Diamondback Tile Backer. For 1/2" (12.7 mm)

Diamondback Tile Backer, use 1-1/2" (38 mm) (minimum) corrosion-resistant backerboard screws. For 5/8" (15.9 mm) Diamondback Tile Backer, use 1-5/8" (41 mm) (minimum) corrosion-resistant backerboard screws. Using nominal 2" (50 mm) wide alkali-resistant fiberglass mesh tape such as FibaTape® Cement Board Tape, bed tape on all joints and corners with material used to set tiles. Apply sealant to seal fixture and plumbing penetrations and abutments to dissimilar materials. If Diamondback Tile Backer meets gypsum board outside the shower, and tiles extend beyond the gypsum board joint and Diamondback Tile Backer, apply nominal 2" (50 mm) wide alkali-resistant fiberglass mesh tape, such as FibaTape® Cement Board Tape, to the joint and skim with latex-modified thinset.

If Diamondback Tile Backer meets gypsum board outside the shower, and tiles end before the gypsum board joint and Diamondback Tile Backer, apply nominal 2" (50 mm) wide fiberglass mesh tape such as FibaTape® Mold-X10™ Drywall Tape to the joint and skim with setting type joint compound, such as CertainTeed® M2Tech® 90, in order to create a smooth, paintable surface.

Residential and Light Commercial Floors

1/4" (6.4 mm) Diamondback Tile Backer is approved for use as an underlayment for

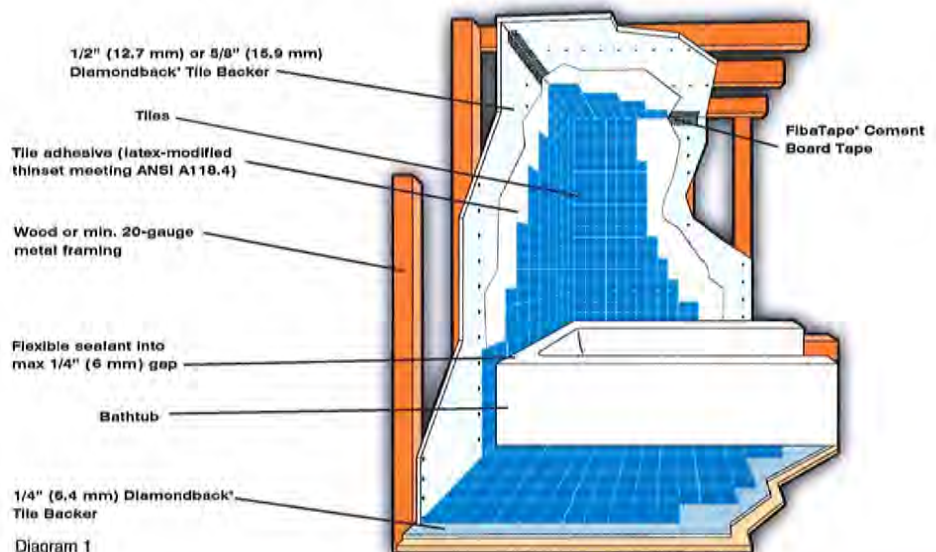
interior residential and light commercial floor tile applications as defined in the TCNA Handbook for Ceramic, Glass, and Stone Tile Installation.

Install 1/4" (6.4 mm) Diamondback Tile Backer over the 3/4" (19.1 mm) plywood subfloor with the textured pattern side up using a latex-modified thinset (ANSI A118.4 or better) liberally applied with a 1/2" x 1/2" (12.7 x 12.7 mm) square-tooth notched trowel. The Diamondback Tile Backer is embedded into the mortar while still pliant. Diamondback Tile Backer board joints are to be staggered to not align with the subfloor joints and butted tightly. Fasten Diamondback Tile Backer to the subfloor with 1-1/4" (32 mm) corrosion-resistant screws beginning in the center of each board and working toward the edges. Space fasteners a maximum 8" (200 mm) o.c. in both directions, driving them flush with the surface (Do Not Countersink). Apply a thin coat of latex-modified thinset (ANSI A118.4 or better) to board joints and embed 2" wide alkali-resistant fiberglass mesh tape with latex-modified thinset. Apply flooring-grade tile with latex-modified thinset (ANSI A118.4 or better) using a 1/4" x 1/4" (6.4 x 6.4 mm) square-tooth notched trowel. Use a 2" x 2" (51 x 51 mm) or larger floor-grade tile. Apply standard floor grout (ANSI A118.6) or polymer modified grout (ANSI A118.7) to the tile joints in accordance with manufacturer's application instructions.

Special notes:

Do not use an additional moisture barrier. (Diamondback Tile Backer has a built-in moisture barrier).

- Do not use all-purpose joint compound or paper tape in wet areas. Use nominal 2" (50 mm) wide alkali-resistant fiberglass mesh tape.
- In all corners, prior to applying the mesh tape, apply a small bead of sealant to the joint without spreading it over the face of Diamondback.
- Do not use Diamondback Tile Backer as a base for nailing and mechanical fastening.
- Do not laminate Diamondback Tile Backer directly to concrete or masonry block. Framing or furring of wall is necessary.



Shower Receptors

Before installing Diamondback® Tile Backer on walls (see Diagram 2), the shower pan or rubber membrane must be adequately sloped to the main drain or weep-hole so as not to impede proper water drainage.

For showers with curbs, a waterproof membrane must be applied up walls for a minimum of 3" (75 mm) and a maximum of 6" (150 mm) above the finished curb. Diamondback Tile Backer should not be used in the curb.

For showers without curbs, a waterproof membrane should be applied up walls for a minimum of 6" (150 mm) and a maximum of 8" (200 mm). Satisfactory blocking should be applied at the bottom framing (e.g., wood).

Special notes: Do not place Diamondback Tile Backer into the shower mortar bed. Leave a maximum 1/4" (6 mm) gap and fill with flexible sealant.

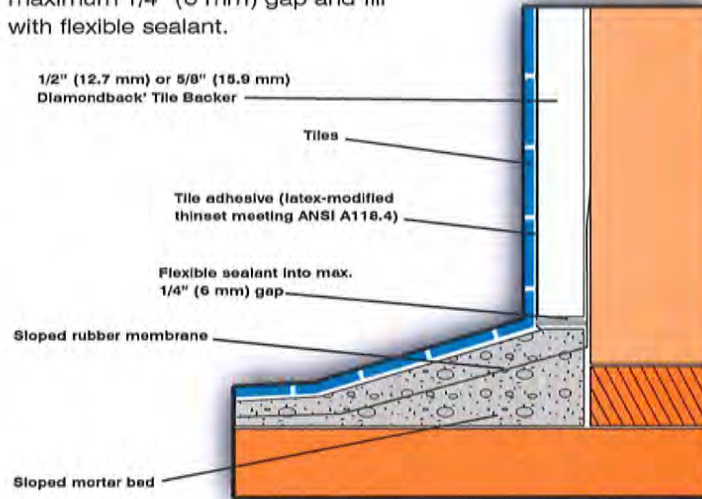


Diagram 2

Bathtub or Shower Receptor

Diamondback Tile Backer may be applied on walls horizontally or vertically.

Thoroughly filling the space between the tile and tub with a flexible sealant will help prevent water penetration.

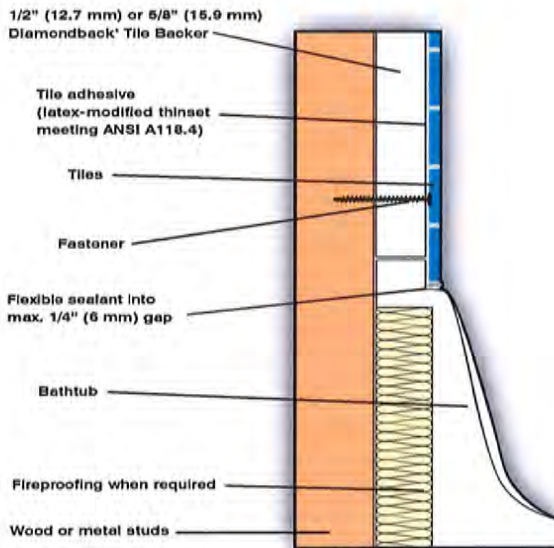


Diagram 3

Shower Pan

Additional Notes: Diamondback Tile Backer may be applied on walls horizontally or vertically.

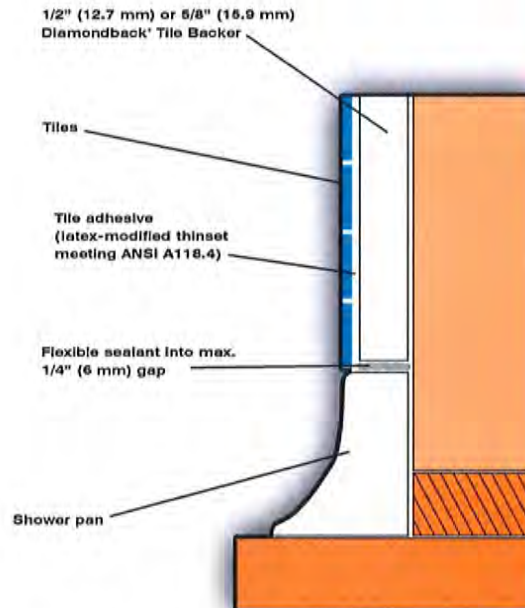


Diagram 4

Countertops

When using Diamondback® Tile Backer on countertops (see Diagram 5), a minimum 23/32" (18.3 mm) exterior glue plywood base must first be installed flat and level, followed by a bedding coat of latex-modified thinset on the plywood using a 1/4" x 1/4" x 1/4" (6 mm x 6 mm x 6 mm) notched trowel. Framing spacing should not exceed 24" (610 mm) o.c. Overhangs, expansion/control joints on cantilever counters must be supported to prevent movement.

Apply clean, dry Diamondback Tile Backer to the base with the textured side facing out prior to the leveling material setting up. Fasten panel every 6" to 8" (150 mm to 200 mm) o.c. in both directions, using 1-1/4" (32 mm) galvanized roofing nails or 1-1/4" (32 mm) corrosion-resistant backerboard screws.

Stagger joints of Diamondback Tile Backer panels with those of the plywood base, butting joints tightly. Tape all joints and corners using nominal 2" (50 mm) wide self-adhering, alkali-resistant fiberglass mesh tape, such as FibaTape® Cement Board Tape and embed the tape with latex cement mortar that meets ANSI A118.4.

Install tile using latex-modified thinset, expansion/control joints and grout in accordance with ANSI A108.

Use a waterproof membrane (ANSI A118.10) to seal edge and bottom of plywood overhang at face of counter and all other plywood surfaces and edges that will be exposed to water or moisture, especially around automatic dishwashers.

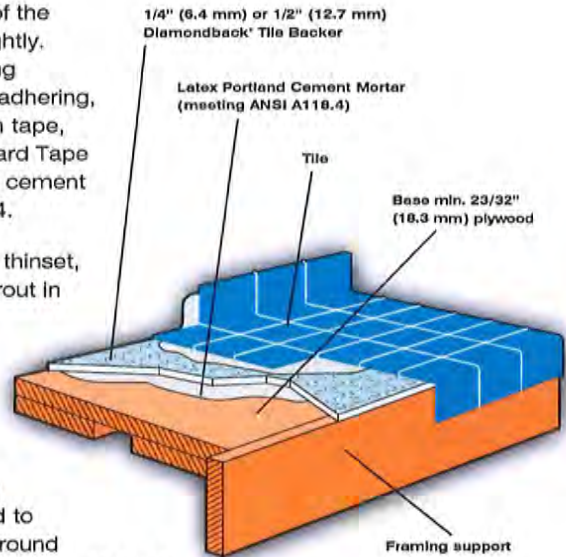


Diagram 5

Non-Tile Walls or Ceilings

Non-Tile, Non-Wet, High-Humidity Areas

Diamondback Tile Backer may also be used in interior non-tile areas that do not come in contact with water, but that experience exposure to high levels of humidity intermittently, such as areas outside tubs and showers in residential construction (see Diagram 6).

For walls, wood framing or steel (25-gauge min.) should be spaced no greater than 16" (400 mm) o.c. for 1/2" (12.7 mm) Diamondback Tile Backer and 24" (610 mm) o.c. for 5/8" (15.9 mm) Diamondback Tile Backer. For ceilings, Diamondback Tile Backer should be installed perpendicular to framing with framing spaced no greater than 12" (300 mm) o.c. for 1/2" (12.7 mm) thickness and 16" (400 mm) o.c. for 5/8" thickness.

Apply nominal 2" (50 mm) wide fiberglass mesh tape, such as FibaTape® Mold-X10™ Drywall Tape, over joints and angles, embedding the tape in a setting-type joint compound, such as CertainTeed's mold resistant CertainTeed® M2Tech® 90 Setting Compound. Using a trowel, apply a heavy skim coat to the entire panel with the compound to create a smooth surface for

paint or wallpaper application. If necessary to create a suitably smooth surface, apply an additional medium skim coat of all purpose joint compound, such as CertainTeed All-Purpose or Lite All-Purpose ready-mixed joint compounds. Before applying paint or wallpaper, the surface should be primed for high-moisture areas as recommended by the product's manufacturer for applications over setting type joint compound.

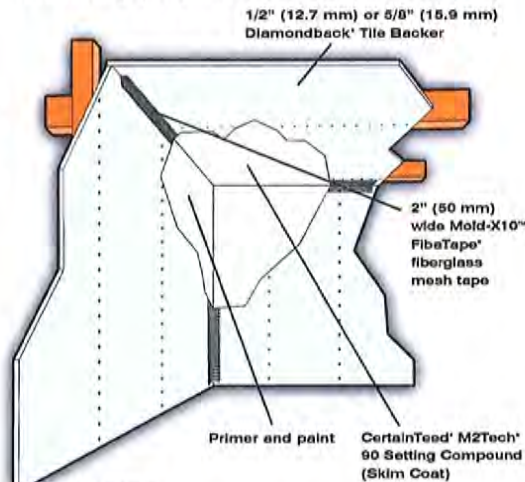


Diagram 6

Finishing Products



CertainTeed® Light Sand 90



CertainTeed® M2Tech® 90 Setting Compound



CertainTeed® All-Purpose



CertainTeed® Mold Resistant Lite All-Purpose



FibaTape® Mold-X10 Drywall Tape



FibaTape® Cement Board Tape

Fire-Rated Assemblies

Diamondback® Tile Backer Type X: The Ultimate Choice

- CertainTeed offers over 70 Type X fire-rated designs in the GlasRoc® family.
- 5/8" (15.9 mm) Diamondback® Tile Backer meets Type X requirements.
- Tile installation is not required to achieve a 1- or 2-hour fire rating.
- Aligns perfectly with 5/8" (15.9 mm) CertainTeed and M2Tech® Type X gypsum board and is UL Classified.

1-Hour Fire Rating

Test Reference: UL U305

Partition Thickness: 4-3/4" (120.7 mm)
Weight, lbs. per Sq. Ft.: 6.8 (33.2 Kg/m²)
5/8" (15.9 mm) Diamondback® Tile Backer Type X applied parallel or at right angles to 2 x 4 wood studs 16" (400 mm) o.c. with 1-7/8" (48 mm) phosphate coated nails 7" (175 mm) o.c. Joints staggered each side and covered with nominal 2" (50 mm) wide 10 x 10 alkali-resistant fiberglass mesh tape and tile adhesive. (Load bearing)

2-Hour Fire Rating

Test Reference: UL U301

Partition Thickness: 6" (152 mm)
Weight, lbs. per Sq. Ft.: 12.0 (58.6 Kg/m²)
Base Layer: 5/8" (15.9 mm) CertainTeed® and M2Tech® Type X or Diamondback Tile Backer Type X gypsum board. Base layer attached horizontally or vertically to minimum 2 x 4 wood studs 16" (400 mm) o.c. with 1-7/8" (48 mm) nails spaced 6" (150 mm) o.c.

Face Layer: 5/8" (15.9 mm) Diamondback Tile Backer Type X applied horizontally or vertically. Face layer attached to studs over base layer with 2-3/8" (60 mm) nails spaced 8" (200 mm) o.c. Vertical joints located over studs. All joints in face layers staggered with joints in base layers. Joints of each base layer offset with joints of base layer on opposite side. (Load bearing)

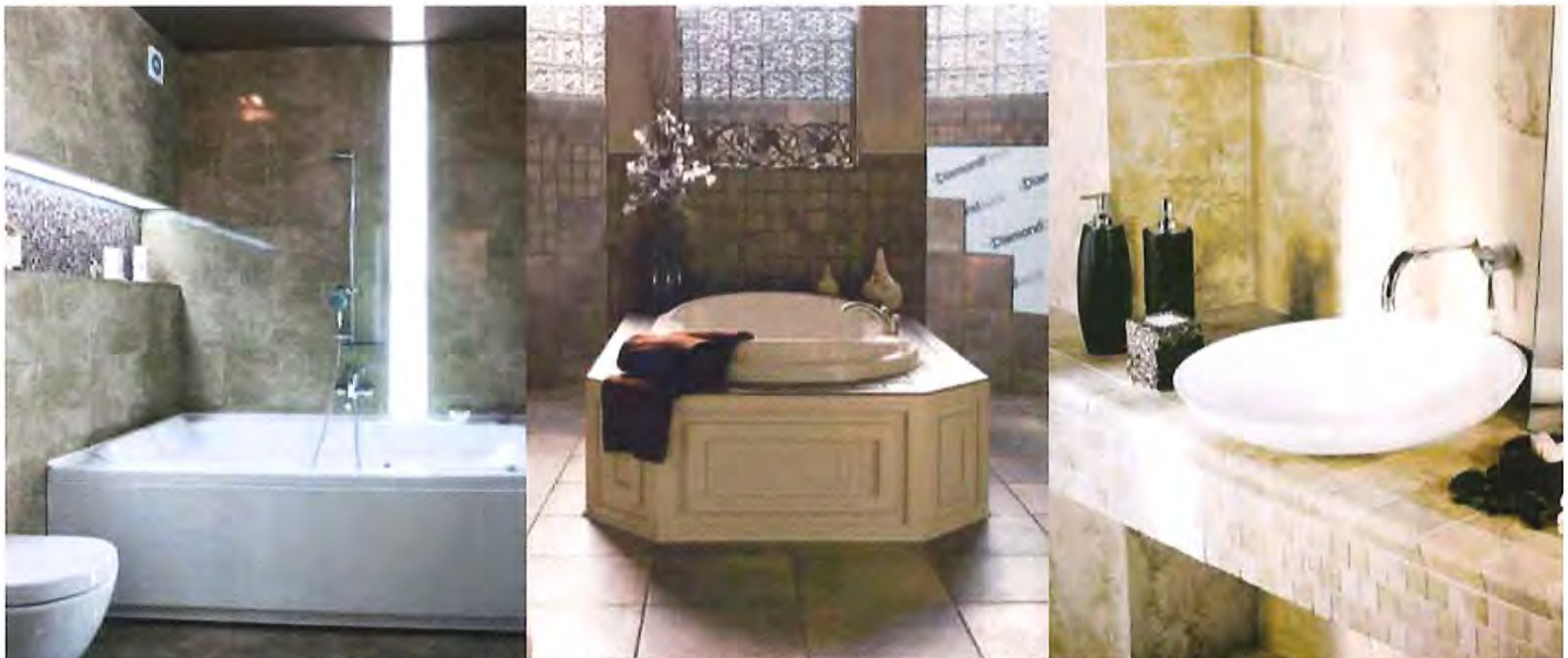
2-Hour Fire Rating

Test Reference: UL U411

Partition Thickness: 5" (127 mm)
Weight, lbs. per Sq. Ft.: 11 (53.7 Kg/m²)
Base Layer: 5/8" (15.9 mm) CertainTeed and M2Tech® Type X or Diamondback Tile Backer Type X gypsum board applied parallel to each side of 2-1/2" (64 mm) metal studs 24" (600 mm) o.c. with 1" (25 mm) Type S screws 16" (400 mm) o.c.

Face Layer: 5/8" (15.9 mm) Diamondback Tile Backer Type X applied parallel to each side of studs with 1-5/8" (41 mm) Type S screws 16" (400 mm) o.c. at edge joints, 12" (300 mm) o.c. at perimeter and intermediate studs. Stagger joints 24" (600 mm) o.c. each layer and side. (Non-load bearing)

See "UL Fire Resistance Directory" for additional fire-rated assemblies.



Diamondback Tile Backer Benefits

Better Physical Performance

Tested in accordance with ASTM C 1178, Diamondback Tile Backer meets or exceeds all physical property requirements.

Enhanced Dimensional Stability

Diamondback Tile Backer resists delamination, rippling, buckling and sagging related to environmental conditions, such as changes in temperature and relative humidity. Diamondback Tile Backer will provide a flat and uniform substrate for tile applications. To back it up, CertainTeed provides a lifetime limited warranty for residential applications and a 20 year limited warranty for commercial applications.

Enhanced Fire Protection

Testing in accordance with ASTM E 136 proved that Diamondback Tile Backer Type X is noncombustible and offers superior fire performance. It achieves a flame-spread/smoke developed rating of less than 25/50 when tested per ASTM E 84, CAN/ULC-S102. Diamondback Tile Backer Type X is UL Classified for Fire resistance for use in fire rated designs. (UL Designation - Type EGRG or GlasRoc)

Easy to Handle and Install

Diamondback Tile Backer is handled and installed like regular paper-faced gypsum.

In addition, it:

- Is significantly lighter than conventional cement board, resulting in lower installation cost.
- The unique texture coating and pattern design create a superior bond between the board surface and tile adhesive that helps prevent tile slippage during installation.
- Moisture barrier face eliminates the need for additional moisture/vapor retarder.
- Can be scored and cut with a standard utility knife. No power tools required, reducing the amount of particle dust versus conventional cement board.
- Snaps free after scoring only one face
- Is easier to handle because skin irritations are minimized due to embedded glass mats and our innovative coating on the face.
- Has uniform field and edge hardness, making trimming and fastening quick and easy, as well as, reducing occurrence of overdriven fasteners.

Low VOCs; GREENGUARD Children & SchoolsSM Certified

Moisture and Mold Resistance

Because Diamondback Tile Backer contains no starches or sugars, it naturally resists mold growth. When tested in accordance with ASTM D 3273, Diamondback Tile Backer exhibited no evidence of mold after a period of 28 days of exposure, yielding a rating of 10, the best rating possible.

Increased Durability

Diamondback Tile Backer resists delaminating because the glass mats are embedded into the panel, creating a more durable, dimensionally stable panel.

Standards and Code Compliance

Diamondback Tile Backer conforms to ASTM C 1178 standards for glass mat water-resistant gypsum backing panel for use as a tile backer. Installation standards, where applicable, are per the Tile Council of North America Inc.'s TCNA Handbook for Ceramic, Glass and Stone Tile Installation for glass mat water-resistant gypsum backer board.



FibaTape is a registered trademark of Saint-Gobain ADFORS. CertainTeed is a trademark of CertainTeed Corporation. All other trademarks are the property of CertainTeed's affiliates and related companies.

NOTICE: The information in this document is subject to change without notice. CertainTeed assumes no responsibility for any errors that may inadvertently appear in this document.

[**Be Certain**] Confidence worth building on.[™]

ASK ABOUT ALL OF OUR OTHER CERTAINTEED® PRODUCTS AND SYSTEMS:

ROOFING • SIDING • TRIM • DECKING • RAILING • FENCE • FOUNDATIONS
GYPSUM • CEILINGS • INSULATION • PIPE

www.certainteed.com/gypsum

CertainTeed Corporation
P.O. Box 860
Valley Forge, PA 19482

Professional: 800-233-8990

© 12/10 CertainTeed Gypsum. Rev. 03-2013
Printed in U.S.A. on recycled paper. CTG-2504/3M

USG SHEETROCK® BRAND PAPER-FACED METAL TAPE-ON BEAD AND TRIM LIFETIME (30-YEAR) LIMITED WARRANTY

USG Sheetrock® Brand Paper-Faced Metal Tape-On Bead and Trim offer exceptional performance in reinforcing and finishing drywall corners. Designed and manufactured to exacting standards, these products provide outstanding long-term performance and beauty.

WHAT IS COVERED?

United States Gypsum Company warrants that USG Sheetrock® Brand Paper-Faced Metal Tape-On Bead and Trim are manufactured:

- From high-quality materials meeting a rigid set of specification standards.
- With a special paper covering the metal profile that provides a surface bond to joint compound meeting or exceeding requirements of ASTM C475.
- From corrosion-resistant, galvanized metal that, after installation, will not cause any red rust discoloration or other damage to the final decoration.
- With a coating on the paper covering that resists scuffing and fuzzing from drywall knives and sanding during the finishing process to facilitate smooth, beautiful finishing of the corner.
- Following rigorous and careful monitoring during manufacture to assure high quality and complete customer satisfaction.
- Free from manufacturing defects.

In addition, USG warrants that when applied to a sound structure built on a permanent foundation using recommended application techniques as described in J1356, USG Sheetrock® Brand Paper-Faced Metal Bead and Trim Submittal Sheet, these products will not edge-crack. Inside-offset corners applied horizontally are not guaranteed against cracking. An example would be the apex of a vaulted ceiling.

HOW LONG DOES COVERAGE LAST?

This warranty runs for a period of 30 years beginning on the date of installation of the products in the building.

WHAT IS NOT COVERED?

USG Sheetrock® Brand Paper-Faced Metal Tape-On Bead and Trim are guaranteed for 30 years, subject to use under normal conditions. USG shall not be responsible for any loss resulting from any of the following:

- Installation practices not in accordance with USG's most recently published recommendations and specification.
- Products damaged and/or subjected to direct contact with water during delivery and while stored at the job site.
- Failure of the owner to maintain the building with reasonable care.
- Abnormal conditions including abuse, neglect, catastrophe and intermittent or prolonged exposure to water.

**EXCLUSION OF OTHER WARRANTIES;
LIMITATION OF DAMAGES; EFFECT OF
STATE LAW**

This warranty states the full extent of USG's responsibility for defects in the Product and all other warranties, especially warranties of fitness for a particular purpose or merchantability, are hereby disclaimed. Consequential and incidental damages are not covered under this warranty.

Some states do not allow the exclusion or limitation of warranties or do not allow the exclusion or limitation of incidental or consequential damages, so the above disclaimers may not apply to you.

WHAT WILL USG DO?

USG will, at its option, replace the goods or refund the purchase price.

HOW DO I GET SERVICE?

As soon as practical, and in any event within 30 days of the time you discover a problem, write to us, including a brief description of the problem. Photographs and videotape of the damaged area are often very helpful. Please also include any sales receipt, invoice or other evidence indicating the date of installation. Please send all this to: United States Gypsum Company, Dept. 143-8, 550 West Adams Street, Chicago, IL 60661. For additional copies of the applicable product literature, please call us at 800 874-4968, please visit usg.com or write to us at the below address.

TRADEMARKS

The trademarks USG, SHEETROCK, IT'S YOUR WORLD. BUILD IT., the USG logo, the design elements and colors, and related marks are trademarks of USG Corporation or its affiliates.

800 USG.4YOU
800 (874-4968)
usg.com

Manufactured by
United States Gypsum Company
550 West Adams Street
Chicago, IL 60661

J1713/rev. 10-16
© 2016 USG Corporation and/or
its affiliates. All rights reserved.
Printed in U.S.A.

USG 
IT'S YOUR WORLD. BUILD IT.®

USG BEADEX® BRAND PAPER-FACED METAL DRYWALL BEAD AND TRIM



- Create beautiful, problem-free corners economically
- Fast, easy application reduces labor costs
- Crack resistance decreases costly callbacks
- Paper covering ensures smooth, attractive corners
- Variety of styles permits design flexibility
- Backed by a lifetime warranty

DESCRIPTION

USG Beadex® Brand Paper-Faced Metal Drywall Bead and Trim includes a full range of high-quality products in shapes and sizes designed to meet any decorating need. Made with a strong paper tape laminated to a sturdy, rust-resistant metal form, USG Beadex® Brand Paper-Faced Metal Drywall Bead and Trim resists edge-cracking and chipping. The coated paper tape covering ensures excellent adhesion of joint compound for a strong, smooth finish. No nailing is required with the tape-on styles, making installation and precision corner alignment easier while eliminating nail pops. Superior performance provides both long-lasting beauty and cost-effective installation.

CERTIFICATION

All USG Beadex® Brand Paper-Faced Metal Drywall Bead and Trim (with the exception of USG Beadex® Santa Fe™ Tape-On, B9 J-trim, B2 Inside Corners and Flex Metal Tape) meet or exceed ASTM C1047, *Standard Specification for Accessories for Gypsum Wallboard*, which covers accessories used in conjunction with assemblies of gypsum wallboard to protect edges and corners and to provide architectural features.

WARRANTY

USG Beadex® Brand Paper-Faced Metal Drywall Bead and Trim is backed by a 30-year warranty. When applied to a sound structure using recommended application techniques, we warrant that this product will not edge crack for the lifetime of the structure. Note that inside offset corners applied horizontally and nail-on paper-faced bead cannot be guaranteed against edge cracking. Refer to USG literature J2135 (tape-on bead) or J2136 (nail-on bead) for full warranty details.

APPLICATION

1. Apply compound (USG Sheetrock® or Beadex® Brand Taping Lite or All Purpose Joint Compound, or USG Sheetrock® Brand Easy Sand™ Setting-Type Joint Compound) to both sides of corner, extending 2 in. on each side for outer corners, 1-1/2 in. for inside corners.
Cut bead to desired length; align tight to ceiling and press firmly with fingers along length of corner to set. Do not bend bead. Run taping knife over corner at a 45-degree angle with even pressure. Remove excess compound using knife to eliminate air bubbles under paper. Allow to dry.
2. For outer corners, apply another coat of compound (USG Sheetrock® or Beadex® Brand All Purpose Lite or UltraLightweight All Purpose Joint Compound, or USG Sheetrock® Brand Easy Sand™ Setting-Type Joint Compound) to both sides, feathering out 5-6 in. on each side. Let dry. Sand lightly as necessary. For inner corners, apply fill coat to one side, feathering out 1 in. Let dry. Apply fill coat to other side using same procedure. Let dry. Sand lightly where necessary.
3. For outer corner, apply finishing coat (USG Sheetrock® or Beadex® Brand All Purpose, Lite All Purpose or UltraLightweight All Purpose Joint Compound, or USG Sheetrock® Brand Easy Sand™ Setting-Type Joint Compound), feathering 8 in. from nose of bead. Draw knife along one side of bead with one edge resting on nose of bead and other on surface of wallboard. Repeat for other side. Let dry. Sand and prime. For inner corners, apply finishing coat to one side, feathering 1 in. past previous coat. Let dry. Apply finishing coat to other side. Let dry. Sand and prime.

L-TRIM INSTALLATION

L-trim is installed in a similar manner to outside corners, except that only one side is finished.

NAIL-ON BEAD INSTALLATION

Where mechanical fastening is desired, use USG Beadex® Brand Paper-Faced Metal Drywall Nail-On Bead. Install by applying staples, screws or nails. Finish as described above for tape-on bead, inside or outside corners.

LIMITATION

Not recommended for veneer plaster applications.

STORAGE

Store in dry place protected from moisture. Avoid bending or other damage.

SUBMITTAL APPROVALS

Job Name	
Contractor	Date

PRODUCT INFORMATION

See usg.com for the most up-to-date product information.

CAUTION

Edges and notches (where present) may be sharp and can cut skin. Unload from package with caution and wear cut-resistant gloves. Falling pieces can pose an injury hazard. Do not store open boxes or individual pieces above chest level. For more information call Product Safety: 800 507-8899 or see the SDS at usg.com.

KEEP OUT OF REACH OF CHILDREN.

TRADEMARKS

The trademarks USG, BEADEX, EASY SAND, SANTA FE, SHEETROCK, IT'S YOUR WORLD, BUILD IT, the USG logo, the design elements and colors, and related marks are trademarks of USG Corporation or its affiliates.

NOTE

Products described here may not be available in all geographic markets. Consult your USG Company sales office or representative for information.

The information in this document is subject to change without notice. USG Corporation assumes no responsibility for any errors that may inadvertently appear in this document.

NOTICE

We shall not be liable for incidental and consequential damages, directly or indirectly sustained, nor for any loss caused by application of these goods not in accordance with current printed instructions or for other than the intended use. Our liability is expressly limited to replacement of defective goods. Any claim shall be deemed waived unless made in writing to us within thirty (30) days from date it was or reasonably should have been discovered.

SAFETY FIRST!

Follow good safety and industrial hygiene practices during handling and installation of products and systems. Take necessary precautions and wear the appropriate personal protective equipment as needed. Read Safety Data Sheets and related literature on products before specification and/or installation.

800 USG.4YOU
800 (874-4968)
usg.com

Manufactured by
United States Gypsum Company
550 West Adams Street
Chicago, IL 60661

J1646-USA-ENG/rev. 3-17
© 2017 USG Corporation and/or
its affiliates. All rights reserved.
Printed in U.S.A.



CertainTeed

Ready-Mix Joint Compound

Product Data and Submittal

Product Description

CertainTeed Joint Compounds are pre-mixed vinyl based compounds that require minimal mixing or thinning. When used properly, CertainTeed Joint Compounds provide a smooth, seamless finish for walls and ceilings.

CertainTeed All-Purpose / Lite All-Purpose

All-purpose compound is suitable for both taping and finishing of wallboard joints, corner trims, and fasteners. It exhibits a strong bond for embedding tape, and provides good workability and low shrinkage for the second and finish coat. It may also be used for patch and repair of plaster walls, hand applied textures, and skim coating. Meets ASTM C475.

CertainTeed Taping / Lite Taping

Taping compound is designed specifically for embedding drywall reinforcing tape. This product exhibits excellent shrinkage and a strong bond for a smooth, uniform wall surface. Taping compound is not recommended for the second and third coats over embedded tape, or as a texturing material. Meets ASTM C475.

CertainTeed Topping / Lite Topping

Topping compound is formulated for the second and third coats over wallboard joints, corner trims and fastener heads. It provides smooth sanding and workability with minimal shrinkage. Topping should not be used for embedding tape or as the first coat over drywall trims. Topping compound may also be used for hand texturing work.

CertainTeed ONE Multi-Purpose

ONE Multi-Purpose is a semi-light joint compound designed for all phases of drywall finishing. Can be used for skim coating and simple texturing. May be applied with either hand or mechanical tools.

CertainTeed EXTRA All-Purpose

EXTRA All-Purpose is a lightweight joint compound designed for all phases of drywall finishing. Can be used for skim coating and simple texturing. May be applied with either hand or mechanical tools.

CertainTeed EXTREME All-Purpose

High-performance, strong, ready-mixed all-purpose joint compound, designed to work with moisture and mold resistant and durability drywall products. This moisture and mold resistant compound utilizes M2Tech® technology and is formulated for tape, fill and finish coats during the drywall finishing process.

CertainTeed Mold Resistant Lite All-Purpose

Mold Resistant Lite All-Purpose compound is formulated to resist mold. It is suitable for all phases of finishing, including taping of wallboard joints, corner trim and fasteners. Can be applied with either hand or mechanical tools. Provides good workability and low shrinkage.

Product Data

Material: Vinyl-type mixture
Acrylic-type mixture
(Extreme All-Purpose)

Color: Off white

Packaging: 3.5 US Gal. (13.2 L) Box
4.5 US Gal. (17 L) Box
45 lb (20.4 kg) Box
48 lb (21.8 kg) Box
1 US Gal. (3.8 L) Pail
12 lb (5.4 kg) Pail
62 lb (28.1 kg) Pail

Coverage: 100 lb (45.5 kg) to 150 lb (68 kg) of joint compound per 1000 ft² (93 m²) of wallboard depending upon the thickness of joint compound applied.

Shelf Life: 9 months when stored properly.

Storage: Protect joint compounds from freezing and from extreme heat. Joint compound should be stored at temperatures above 55°F (13°C) for at least 48 hours prior to application. Do not stack material (cartons or pails) more than 2 pallets high. Rotate stock. Do not store in direct sunlight.

Technical References: For additional information on the application and finishing of Joint Compounds please consult:

- ASTM C475: Standard Specification for Joint Compound and Joint Tape for Finishing Gypsum Board.
- ASTM C840: Standard Specification for Application and Finishing of Gypsum Board.
- GA-214: Gypsum Association publication "Levels of Gypsum Board Finish."
- GA-216: Gypsum Association publication "Recommended Specifications for the Application and Finishing of Gypsum Board."

Continued on back

Job Name _____

Contractor _____

Date _____

Products Specified: _____

CertainTeed
SAINT-GOBAIN

Working with the Product

Site conditions

The room temperature and wallboard should be maintained at 55°F (13°C) for 48 hours prior to application and continuously thereafter until compound is completely dry. Gypsum wallboard should be dry for at least 48 hours before the application of joint compounds. Continuous ventilation must be provided to ensure proper drying.

Preparation

Joint compound should be mixed lightly. If additional thinning is required, add water in half-pint increments (250 ml) increments, as necessary, then re-mix prior to application. Do not over thin, since excessive water may cause abnormal shrinkage, edge cracking, poor bond, or lack of hide. Do not intermix joint compound with other materials.

Application

Repair all imperfections present in the gypsum panels prior to finishing with joint compounds. Apply joint compound over dry surfaces only. Subsequent coats of joint compound should not be applied until the previous applications are completely dry. Drying times may vary depending on the joint compound and the environmental conditions. Joint Compounds are suitable for either hand or mechanical tool applications.

Finishing Joints

Apply a thin layer of taping compound to the tapered edge. Press joint tape firmly into the compound, while centering it over the seam and embed with a broad knife. Sufficient joint compound must remain under the tape to ensure a proper bond. Allow to dry. Apply a second coat of topping compound over the embedding coat and feather out beyond the first coat. Allow the second coat to dry thoroughly prior to application of the finish coat. Spread the finish coat evenly over the second coat and feather to a smooth uniform finish. After each coat had dried, sand or sponge smooth prior to the application of the ensuing coat.

Finishing beads and trims

Apply first coat of compound to all the bead and trim and properly feather out onto the panel. Wet sand, as necessary. Allow the compound to dry thoroughly prior to the application of the second coat. Apply the second coat and feather at least 2" beyond first coat, allow to dry completely and wet sand, if necessary. Apply the finish coat and extend the compound slightly beyond the second coat. When dry, sand as necessary to provide a smooth surface for decoration.

Sanding

Sand with a wet sponge, if necessary, to eliminate dust and scuffing of the wallboard paper. Remove high spots using as few strokes as necessary. Clean the sponge frequently during use. If dry sanding is necessary, use 150 grit sand paper or finer. Lightly sand imperfections while being careful to avoid scuffing the paper. When dry sanding, wear a NIOSH approved dust mask and eye protection.

Decoration

Ensure that all surfaces to be decorated are thoroughly dry and dust free. Either a good quality drywall primer or an undiluted latex wall paint with a high solids content should be applied prior to painting, texturing or wallpapering. Adhere to all manufacturers' specific directions for painting and decorating materials.

Cleaning

Clean tools immediately after each use with warm, soapy water then wipe the tool surfaces dry to prevent rust; compound is very difficult to remove from tools once it hardens. Leftover compound should be sealed and stored appropriately.

SDS

SDS Safety Data Sheets are available on our web site, www.CertainTeed.com.

Warning

Dust generated from sanding product may cause eye, skin, nose, throat or respiratory irritation. Use wet-sanding to avoid creating dust. Avoid inhalation of dust and eye contact. Product contains silica. Inhalation of respirable silica dust can cause silicosis, a potentially disabling lung disease, known to cause lung cancer.

When sanding, drilling or abrading product during installation or handling: (1) Ensure adequate ventilation. (2) Wear a dust mask or, if dust may exceed PEL, use NIOSH/MSHA approved respirator. (3) Warn others in area. (4) Wear eye protection. If eye contact occurs, flush with lukewarm, gently flowing water for 5 minutes or until particle/dust is removed.

For further information, refer to Safety Data Sheet or consult manufacturer by calling 1-800-327-7455.

KEEP OUT OF REACH OF CHILDREN.

Warranty

Since methods and condition of application such as temperature, humidity and over thinning are beyond our control, CertainTeed Gypsum, Inc. (CertainTeed) will not be responsible for the failure of this Product when the Product is not used according to directions and specifications and accepted standards of procedure inherent in drywall application; or when reasonable allowance is not made by the user for adverse weather and job conditions. However, if this product proves to be defective, maximum liability shall be limited to replacement of the material only or refund of the purchase price. This shall be the full limit whatsoever of CertainTeed's liability. All claims shall be submitted in writing to CertainTeed within thirty days from the date of discovery. Provincial or Federal laws may provide rights in addition to this warranty that cannot be modified or excluded.



ASK ABOUT ALL OF OUR OTHER CERTAINTEED® PRODUCTS AND SYSTEMS:

ROOFING • SIDING • TRIM • DECKING • RAILING • FENCE
GYPSUM • CEILINGS • INSULATION

Professional: 800-233-8990 Consumer: 800-782-8777